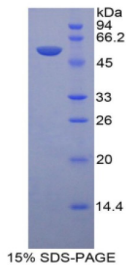


Human Lysosomal Associated Membrane Protein 1 (LAMP1) Protein

Catalogue No.: abx067859



SDS-PAGE analysis of Human LAMP1 Protein.

Recombinant Lysosomal Associated Membrane Protein 1 (LAMP1) is a recombinant Human protein produced in a Prokaryotic expression system (E. coli).

Target:	Lysosomal Associated Membrane Protein 1 (LAMP1)
Origin:	Human
Expression:	Recombinant
Tested Applications:	WB, SDS-PAGE
Host:	E. coli
Conjugation:	Unconjugated
Form:	Lyophilized
Purity:	> 95%
Reconstitution:	To keep the original salt concentration, we recommend reconstituting to the original concentration prior to lyophilization (see Concentration) in ddH ₂ O. If a lower concentration is required, dilute in 20 mM Tris, 150 mM NaCl, pH 8.0. If a higher concentration is required, the product can be reconstituted directly in 20 mM Tris, 150 mM NaCl, pH 8.0, though please note that this will change the overall salt concentration. The stock concentration should be between 0.1-1.0 mg/ml. Do not vortex.
Storage:	Store at 2-8 °C for up to one month. Store at -80 °C for up to one year. Avoid repeated freeze/thaw cycles.
UniProt Primary AC:	P11279 (UniProt , ExPASy)
KEGG:	hsa:3916
String:	9606.ENSP00000333298

Datasheet

Version: 1.0.0
Revision date: 23 Feb 2025



Molecular Weight: Calculated MW: 56.9 kDa
Observed MW (SDS-PAGE): 57 kDa

Sequence Fragment: Ala49-Ser297

Sequence: AF SVNYDTKSGP KNMTFDLPSD ATVVLNRSSC GKENTS DPSL VIAFGRGHTL TLNFTRNATR
YSVQLM
SFVY NLS DTHLFPN ASSKEIKTVE SITDIRADID KKYRCVSGTQ VHMNNVTVTL HDATIQAYLS NSSF
SRGETR CEQDRPSPTT APPAPPSPSP SPVPKSPSVD KYNVSGTNGT CLLASMGLQL
NLTYERKDNT TV
TRLLNINP NKTSASGSCG AHLVTLELHS EGTTVLLFQF GMNASSS

Tag: N-terminal His tag and GST tag

Buffer: Prior to lyophilization: 20 mM Tris, 150 mM NaCl, pH 8.0, containing 1 mM EDTA, 1 mM DTT, 0.01% Sarcosyl, 5% Trehalose and Proclin-300.

Activity: Not tested

Concentration: Prior to lyophilization: 200 µg/ml

Note: This product is for research use only.
Not for human consumption, cosmetic, therapeutic or diagnostic use.

For Reference Only