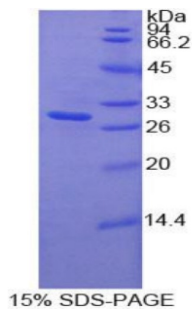


## Human Macrophage Stimulating 1 Receptor (MST1R) Protein

Catalogue No.: abx067906



SDS-PAGE analysis of Human MST1R Protein.

Recombinant Macrophage Stimulating 1 Receptor (MST1R) is a recombinant Human protein produced in a Prokaryotic expression system (E. coli).

**Target:** Macrophage Stimulating 1 Receptor (MST1R)

**Origin:** Human

**Expression:** Recombinant

**Tested Applications:** WB, SDS-PAGE

**Host:** E. coli

**Conjugation:** Unconjugated

**Form:** Lyophilized

**Purity:** > 95%

**Reconstitution:** To keep the original salt concentration, we recommend reconstituting to the original concentration prior to lyophilization (see Concentration) in ddH<sub>2</sub>O. If a lower concentration is required, dilute in PBS, pH 7.4. If a higher concentration is required, the product can be reconstituted directly in PBS, pH 7.4, though please note that this will change the overall salt concentration. The stock concentration should be between 0.1-1.0 mg/ml. Do not vortex.

**Storage:** Store at 2-8 °C for up to one month. Store at -80 °C for up to one year. Avoid repeated freeze/thaw cycles.

**UniProt Primary AC:** Q04912 ([UniProt](#), [ExPASy](#))

**KEGG:** hsa:4486

**String:** [9606.ENSP00000296474](#)

# Datasheet

Version: 1.0.0  
Revision date: 13 Mar 2025



**Molecular Weight:** Calculated MW: 29.9 kDa

**Sequence Fragment:** His1092-Leu1316

**Sequence:** HFGVVYHGE YIDQAQNR IQ CAIKSLSRIT EMQQVEAFLR EGLLMRGLNH PNVLALIGIM  
LPPEGLPHVL  
LPYMCHGDLL QFIRSPQRNP TVKDLISFGL QVARSMEYLA EQKFVHRDLA ARNCMLDES F  
TVKVADFG  
LA RDILDREYYS VQQRHARLP VKWMALES LQ TYRFTTKSDV WSFGVLLWEL LTRGAPPYRH  
IDPFDL  
THFL AQGRRLPQPE YCPDSL

**Tag:** N-terminal His tag

**Buffer:** Prior to lyophilization: PBS, pH 7.4, containing 0.01% Sarcosyl, 1 mM DTT, 5% Trehalose and Proclin-300.

**Activity:** Not tested

**Concentration:** Prior to lyophilization: 200 µg/ml

**Note:** THIS PRODUCT IS FOR RESEARCH USE ONLY. NOT FOR USE IN DIAGNOSTIC, THERAPEUTIC OR COSMETIC PROCEDURES. NOT FOR HUMAN OR ANIMAL CONSUMPTION.

For Reference Only