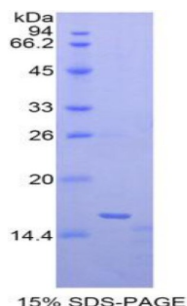
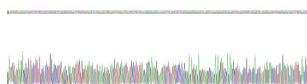


Human Matrix Gla Protein (MGP) Protein

Catalogue No.: abx067935



SDS-PAGE analysis of Human Matrix Gla Protein.



Gene sequencing extract of Human Matrix Gla Protein.

Recombinant Matrix Gla Protein (MGP) is a recombinant Human protein produced in a Prokaryotic expression system (E. coli).

Target: Matrix Gla Protein (MGP)

Origin: Human

Expression: Recombinant

Tested Applications: WB, SDS-PAGE

Host: E. coli

Conjugation: Unconjugated

Form: Lyophilized

Purity: > 90%

Reconstitution: To keep the original salt concentration, we recommend reconstituting to the original concentration prior to lyophilization (see Concentration) in ddH₂O. If a lower concentration is required, dilute in 20 mM Tris, 150 mM NaCl, pH 8.0. If a higher concentration is required, the product can be reconstituted directly in 20 mM Tris, 150 mM NaCl, pH 8.0, though please note that this will change the overall salt concentration. The stock concentration should be between 0.1-1.0 mg/ml. Do not vortex.

Datasheet

Version: 5.0.0

Revision date: 27 Apr 2025



Storage: Store at 2-8 °C for up to one month. Store at -80 °C for up to one year. Avoid repeated freeze/thaw cycles.

UniProt Primary AC: P08493 ([UniProt](#), [ExPASy](#))

KEGG: hsa:4256

Molecular Weight: Calculated MW: 16.2 kDa
Observed MW (SDS-PAGE): 16 kDa

Sequence Fragment: Met1-Lys103

Sequence: MKSLILLAIL AALAVVTL CY ESHESMESYE LNPFINRRNA NTFISPQQRW RAKVQERIRE
RSKPVHELNR EACDDYRLCE RYAMVYGYN AYNRYFRKRR GTK

Tag: N-terminal His tag

Buffer: Prior to lyophilization: 20 mM Tris, 150 mM NaCl, pH 8.0, containing 1 mM EDTA, 1 mM DTT, 0.01% Sarcosyl, 5% Trehalose and Proclin-300.

Activity: Not tested

Concentration: Prior to lyophilization: 200 µg/ml

Note: THIS PRODUCT IS FOR RESEARCH USE ONLY. NOT FOR USE IN DIAGNOSTIC, THERAPEUTIC OR COSMETIC PROCEDURES. NOT FOR HUMAN OR ANIMAL CONSUMPTION.

For Reference Only