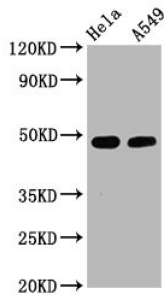
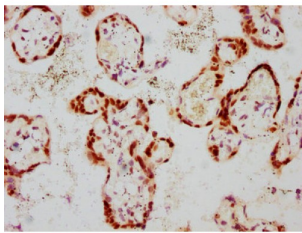


GATA3 (pS308) Antibody

Catalogue No.: abx242969



Western blot analysis of HeLa whole cell lysate (Lane 1) and A549 whole cell lysate (Lane 2) using GATA3 (pS308) Antibody (2.5 µg/ml) and Goat Polyclonal Anti-Rabbit IgG (1/50000 dilution). Predicted MW: 48 kDa, Observed MW: 48 kDa



Immunohistochemistry analysis of paraffin-embedded human placenta tissue using GATA3 (pS308) Antibody (1/100 dilution, incubated at 4°C overnight). High pressure antigen retrieval was carried out using citrate buffer (pH 6.0), blocked with 10% normal goat serum 30min at room temperature, followed by incubation with primary antibody. The primary was then detected by a biotinylated secondary antibody and visualized using an HRP conjugated SP system.

GATA3 (pS308) Antibody is a Monoclonal Antibody against GATA3.

Target: GATA3

Clonality: Monoclonal

Clone: O243

Target Modification: Ser308

Modification: Phosphorylation

Reactivity: Human

Expression: Recombinant

Tested Applications: ELISA, WB, IHC

Host: Rabbit

Recommended dilutions: WB: 1/500 - 1/5000, IHC: 1/50 - 1/200. Optimal dilutions/concentrations should be determined by the end user.

Conjugation: Unconjugated

Datasheet

Version: 3.0.0
Revision date: 08 Apr 2025



Immunogen:	A synthesized peptide derived from human Phospho-GATA3 (S308).
Isotype:	IgG
Form:	Liquid
Purification:	Purified by affinity chromatography.
Storage:	Aliquot and store at -20 °C. Avoid repeated freeze/thaw cycles.
UniProt Primary AC:	P23771 (UniProt , ExPASy)
Gene Symbol:	GATA3
GeneID:	2625
OMIM:	131320
HGNC:	4172
KEGG:	hsa:2625
Ensembl:	ENSG00000107485
String:	9606.ENSP00000368632
Molecular Weight:	Calculated MW: 48 kDa Observed MW: 48 kDa
Buffer:	PBS, pH 7.4, 150 mM NaCl, 0.02% sodium azide and 50% glycerol.
Concentration:	2 mg/ml
Note:	THIS PRODUCT IS FOR RESEARCH USE ONLY. NOT FOR USE IN DIAGNOSTIC, THERAPEUTIC OR COSMETIC PROCEDURES. NOT FOR HUMAN OR ANIMAL CONSUMPTION.