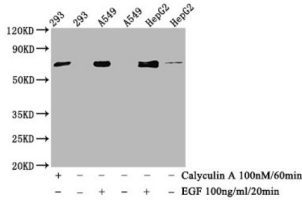


ATF2 (pT71) Antibody

Catalogue No.: abx242991



Western Blot

Positive WB detected in: 293 whole cell lysate, A549 whole cell lysate, HepG2 whole cell lysate (treated with Calyculin A or EGF)

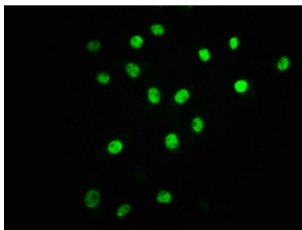
All lanes: Phospho-ATF2 antibody at 1.015 µg/ml

Secondary

Goat polyclonal to rabbit IgG at 1/50000 dilution

Predicted band size: 70 KDa

Observed band size: 70 KDa



Immunofluorescence staining of A549 cells (treated with 100mM EGF for 20min) using ATF2 (pT71) Antibody at 1/63, counter-stained with DAPI. The cells were fixed in 4% formaldehyde, permeabilized using 0.2% Triton X-100 and blocked in 10% normal Goat Serum. The cells were then incubated with the antibody overnight at 4°C. The secondary antibody was AF488-conjugated AffiniPure Goat Anti-Rabbit IgG (H+L).

ATF2 (pT71) Antibody is a Monoclonal Antibody against ATF2.

Target:	ATF2
Clonality:	Monoclonal
Reactivity:	Human
Expression:	Recombinant
Tested Applications:	ELISA, WB, IF/ICC
Host:	Rabbit
Recommended dilutions:	WB: 1/500 - 1/5000, IF/ICC: 1/20 - 1/200. Optimal dilutions/concentrations should be determined by the end user.
Conjugation:	Unconjugated
Immunogen:	A synthesized peptide derived from human Phospho-ATF2 (T71).
Isotype:	IgG
Form:	Liquid

Datasheet

Version: 1.0.0
Revision date: 22 Feb 2025



Purification:	Purified by affinity chromatography.
Storage:	Aliquot and store at -20 °C. Avoid repeated freeze/thaw cycles.
UniProt Primary AC:	P15336 (UniProt , ExPASy)
Buffer:	PBS, pH 7.4, 150 mM NaCl, 0.02% sodium azide and 50% glycerol.
Note:	This product is for research use only.

For Reference Only