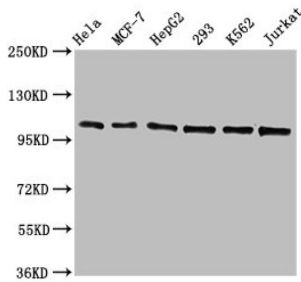


CDC5L Antibody

Catalogue No.: abx243057



Western Blot

Positive WB detected in: HeLa whole cell lysate, MCF-7 whole cell lysate, HepG2 whole cell lysate, 293 whole cell lysate, K562 whole cell lysate, Jurkat whole cell lysate

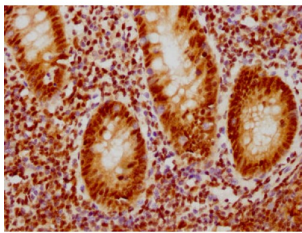
All lanes: CDC5L antibody at 1.3 µg/ml

Secondary

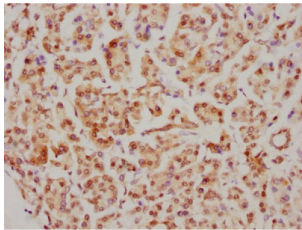
Goat polyclonal to rabbit IgG at 1/50000 dilution

Predicted band size: 93 KDa

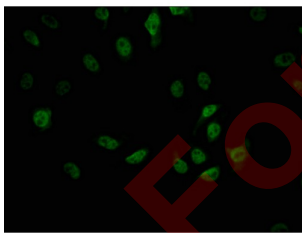
Observed band size: 100 KDa



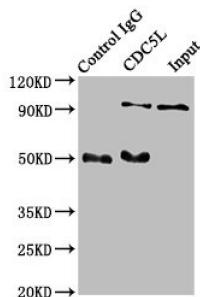
Immunohistochemistry analysis of CDC5L Antibody diluted at 1/126.5 and staining in paraffin-embedded human appendix tissue. After dewaxing and hydration, antigen retrieval was mediated by high pressure in a citrate buffer (pH 6.0). Section was blocked with 10% normal goat serum 30min at RT. Then primary antibody (1% BSA) was incubated at 4°C overnight. The primary is detected by a biotinylated secondary antibody and visualized using an HRP conjugated SP system.



Immunohistochemistry analysis of CDC5L Antibody diluted at 1:126.5 and staining in paraffin-embedded human pancreatic tissue. After dewaxing and hydration, antigen retrieval was mediated by high pressure in a citrate buffer (pH 6.0). Section was blocked with 10% normal goat serum 30min at RT. Then primary antibody (1% BSA) was incubated at 4°C overnight. The primary is detected by a biotinylated secondary antibody and visualized using an HRP conjugated SP system.



Immunofluorescence staining of A549 cells with CDC5L Antibody at 1/42, counter-stained with DAPI. The cells were fixed in 4% formaldehyde, permeabilized using 0.2% Triton X-100 and blocked in 10% normal Goat Serum. The cells were then incubated with the antibody overnight at 4°C. The secondary antibody was AF488-conjugated AffiniPure Goat Anti-Rabbit IgG (H+L).



Immunoprecipitating CDC5L in HeLa whole cell lysate

Lane 1: Rabbit control IgG instead of CDC5L Antibody in HeLa whole cell lysate. For western blotting, a HRP-conjugated Protein G antibody was used as the secondary antibody (1/2000)

Lane 2: CDC5L Antibody (3 µg) + HeLa whole cell lysate (500 µg)

Lane 3: HeLa whole cell lysate (20 µg)

Datasheet

Version: 2.0.0
Revision date: 25 Sep 2024



CDC5L Antibody is a Monoclonal Antibody against CDC5L.

Target:	CDC5L
Clonality:	Monoclonal
Reactivity:	Human
Expression:	Recombinant
Tested Applications:	ELISA, WB, IHC, IF/ICC, IP
Host:	Rabbit
Recommended dilutions:	WB: 1/500 - 1/5000, IHC: 1/50 - 1/200, IF/ICC: 1/20 - 1/200, IP: 1/200 - 1/1000. Optimal dilutions/concentrations should be determined by the end user.
Conjugation:	Unconjugated
Immunogen:	A synthesized peptide derived from human CDC5L.
Isotype:	IgG
Form:	Liquid
Purification:	Purified by affinity chromatography.
Storage:	Aliquot and store at -20 °C. Avoid repeated freeze/thaw cycles.
UniProt Primary AC:	Q99459 (UniProt , ExPASy)
KEGG:	hsa:988
String:	9606.ENSP00000360532
Buffer:	PBS, pH 7.4, 150 mM NaCl, 0.02% sodium azide and 50% glycerol.
Note:	This product is for research use only.