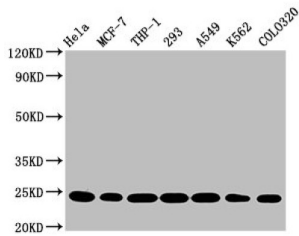


BAK1 Antibody

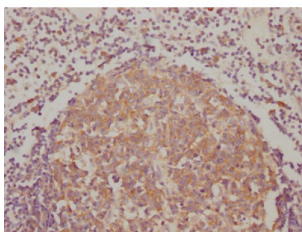
Catalogue No.: abx243065



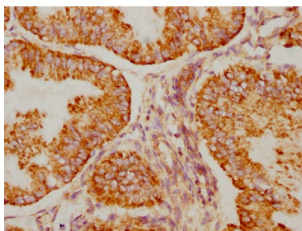
Western Blot

Positive WB detected in: HeLa whole cell lysate, MCF-7 whole cell lysate, THP-1 whole cell lysate, 293 whole cell lysate, A549 whole cell lysate, K562 whole cell lysate, Colo320 whole cell lysate

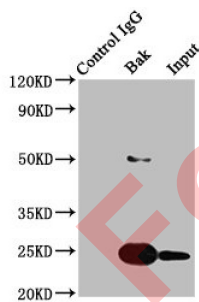
All lanes: BAK1 antibody at 0.9 µg/ml
Secondary
Goat polyclonal to rabbit IgG at 1/50000 dilution
Predicted band size: 24, 17 KDa
Observed band size: 24 KDa



Immunohistochemistry analysis of BAK1 Antibody diluted at 1/90 and staining in paraffin-embedded human lymph node tissue. After dewaxing and hydration, antigen retrieval was mediated by high pressure in a citrate buffer (pH 6.0). Section was blocked with 10% normal goat serum 30min at RT. Then primary antibody (1% BSA) was incubated at 4°C overnight. The primary is detected by a biotinylated secondary antibody and visualized using an HRP conjugated SP system.

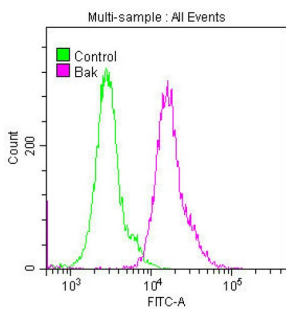


Immunohistochemistry analysis of BAK1 Antibody diluted at 1/90 and staining in paraffin-embedded human endometrial cancer. After dewaxing and hydration, antigen retrieval was mediated by high pressure in a citrate buffer (pH 6.0). Section was blocked with 10% normal goat serum 30min at RT. Then primary antibody (1% BSA) was incubated at 4°C overnight. The primary is detected by a biotinylated secondary antibody and visualized using an HRP conjugated SP system.



Immunoprecipitating BAK1 in HEK293 whole cell lysate

Lane 1: Rabbit control IgG instead of BAK1 Antibody in HEK293 whole cell lysate. For western blotting, a HRP-conjugated Protein G antibody was used as the secondary antibody (1/2000)
Lane 2: BAK1 Antibody (3 µg) + HEK293 whole cell lysate (500 µg)
Lane 3: HEK293 whole cell lysate (20 µg)



Overlay histogram showing HeLa cells stained with BAK1 Antibody (red line) at 1/50. The cells were fixed with 70% Ethylalcohol (18h) and then permeabilized with 0.3% Triton X-100 for 2 min. The cells were then incubated in 1x PBS /10% normal goat serum to block non-specific protein-protein interactions followed by primary antibody for 1 h at 4°C. The secondary antibody used was FITC goat anti-rabbit IgG (H+L) at 1/200 dilution for 1 h at 4°C. Control antibody (green line) was used under the same conditions. Acquisition of >10,000 events was performed.

Datasheet

Version: 1.0.0
Revision date: 14 Jan 2025



BAK1 Antibody is a Monoclonal Antibody against BAK1.

Target:	BAK1
Clonality:	Monoclonal
Reactivity:	Human
Expression:	Recombinant
Tested Applications:	ELISA, WB, IHC, FCM, IP
Host:	Rabbit
Recommended dilutions:	WB: 1/500 - 1/5000, IHC: 1/50 - 1/200, IP: 1/200 - 1/1000. Optimal dilutions/concentrations should be determined by the end user.
Conjugation:	Unconjugated
Immunogen:	A synthesized peptide derived from human BAK1.
Isotype:	IgG
Form:	Liquid
Purification:	Purified by affinity chromatography.
Storage:	Aliquot and store at -20 °C. Avoid repeated freeze/thaw cycles.
UniProt Primary AC:	Q16611 (UniProt , ExPASy)
KEGG:	hsa:578
String:	9606.ENSP00000363591
Buffer:	PBS, pH 7.4, 150 mM NaCl, 0.02% sodium azide and 50% glycerol.
Note:	This product is for research use only.