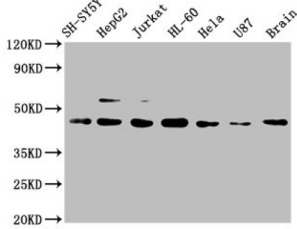


CCR9 Antibody

Catalogue No.: abx243073



Western Blot

Positive WB detected in: SH-SY5Y whole cell lysate, HepG2 whole cell lysate, Jurkat whole cell lysate, HL-60 whole cell lysate, HeLa whole cell lysate, U87 whole cell lysate, Mouse brain tissue

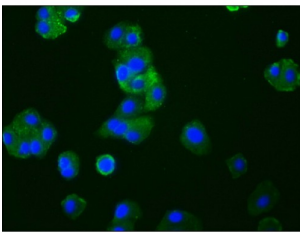
All lanes: CCR9 antibody at 1 µg/ml

Secondary

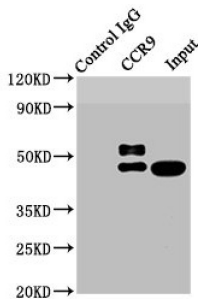
Goat polyclonal to rabbit IgG at 1/50000 dilution

Predicted band size: 43, 41 KDa

Observed band size: 43 KDa



Immunofluorescence staining of HepG2 cells using CCR9 Antibody at 1/33, counter-stained with DAPI. The cells were fixed in 4% formaldehyde, permeabilized using 0.2% Triton X-100 and blocked in 10% normal Goat Serum. The cells were then incubated with the antibody overnight at 4°C. The secondary antibody was AF488-conjugated AffiniPure Goat Anti-Rabbit IgG (H+L).



Immunoprecipitating CCR9 in HL-60 whole cell lysate

Lane 1: Rabbit control IgG instead of CCR9 Antibody in HL-60 whole cell lysate. For western blotting, a HRP-conjugated Protein G antibody was used as the secondary antibody (1/2000)

Lane 2: CCR9 Antibody (3 µg) + HL-60 whole cell lysate (500 µg)

Lane 3: HL-60 whole cell lysate (20 µg)

CCR9 Antibody is a Monoclonal Antibody against CCR9.

Target: CCR9

Clonality: Monoclonal

Clone: V147

Reactivity: Human, Mouse

Expression: Recombinant

Tested Applications: ELISA, WB, IF/ICC, IP

Host: Rabbit

Datasheet

Version: 2.0.0
Revision date: 13 Mar 2025



Recommended dilutions: WB: 1/500 - 1/5000, IF/ICC: 1/20 - 1/200, IP: 1/200 - 1/1000. Optimal dilutions/concentrations should be determined by the end user.

Conjugation: Unconjugated

Immunogen: A synthesized peptide derived from human CCR9.

Isotype: IgG

Form: Liquid

Purification: Purified by affinity chromatography.

Storage: Aliquot and store at -20 °C. Avoid repeated freeze/thaw cycles.

UniProt Primary AC: P51686 ([UniProt](#), [ExPASy](#))

KEGG: hsa:10803

String: [9606.ENSP00000350256](#)

Buffer: PBS, pH 7.4, 150 mM NaCl, 0.02% sodium azide and 50% glycerol.

Note: THIS PRODUCT IS FOR RESEARCH USE ONLY. NOT FOR USE IN DIAGNOSTIC, THERAPEUTIC OR COSMETIC PROCEDURES. NOT FOR HUMAN OR ANIMAL CONSUMPTION.

For Reference Only