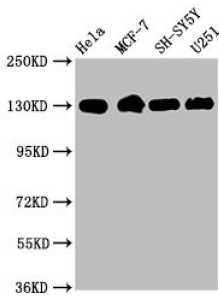


Integrin Beta 1 (ITGB1) Antibody

Catalogue No.: abx243110



Western Blot

Positive WB detected in: HeLa whole cell lysate, MCF-7 whole cell lysate, SH-SY5Y whole cell lysate, U251 whole cell lysate

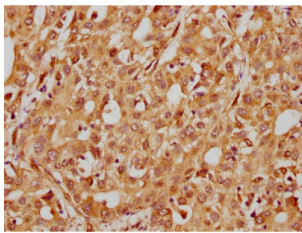
All lanes: Integrin beta-1/CD29 antibody at 1.9 µg/ml

Secondary

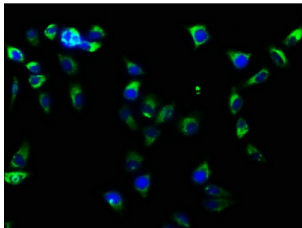
Goat polyclonal to rabbit IgG at 1/50000 dilution

Predicted band size: 89, 88, 92 KDa

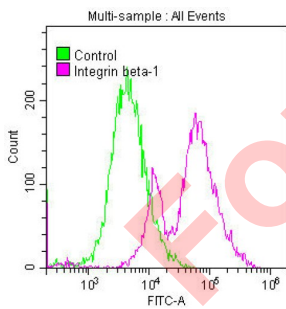
Observed band size: 130 KDa



Immunohistochemistry analysis of ITGB1 Antibody diluted at 1/185 and staining in paraffin-embedded human liver cancer. After dewaxing and hydration, antigen retrieval was mediated by high pressure in a citrate buffer (pH 6.0). Section was blocked with 10% normal goat serum 30min at RT. Then primary antibody (1% BSA) was incubated at 4°C overnight. The primary is detected by a biotinylated secondary antibody and visualized using an HRP conjugated SP system.



Immunofluorescence staining of HeLa cells with ITGB1 Antibody at 1/61, counter-stained with DAPI. The cells were fixed in 4% formaldehyde, permeabilized using 0.2% Triton X-100 and blocked in 10% normal Goat Serum. The cells were then incubated with the antibody overnight at 4°C. The secondary antibody was AF488-conjugated AffiniPure Goat Anti-Rabbit IgG (H+L).



Overlay histogram showing MCF-7 cells stained with ITGB1 Antibody (red line) at 1/50. The cells were fixed with 70% Ethylalcohol (18h) and then permeabilized with 0.3% Triton X-100 for 2 min. The cells were then incubated in 1x PBS /10% normal goat serum to block non-specific protein-protein interactions followed by primary antibody for 1 h at 4°C. The secondary antibody used was FITC goat anti-rabbit IgG (H+L) at 1/200 dilution for 1 h at 4°C. Control antibody (green line) was used under the same conditions. Acquisition of >10,000 events was performed.

ITGB1 Antibody is a Monoclonal Antibody against ITGB1.

Target: Integrin Beta 1 (ITGB1)

Clonality: Monoclonal

Reactivity: Human

Datasheet

Version: 1.0.0
Revision date: 23 Feb 2025



Expression:	Recombinant
Tested Applications:	ELISA, WB, IHC, IF/ICC, FCM
Host:	Rabbit
Recommended dilutions:	WB: 1/500 - 1/5000, IHC: 1/50 - 1/200, IF/ICC: 1/20 - 1/200. Optimal dilutions/concentrations should be determined by the end user.
Conjugation:	Unconjugated
Immunogen:	A synthesized peptide derived from human ITGB1.
Isotype:	IgG
Form:	Liquid
Purification:	Purified by affinity chromatography.
Storage:	Aliquot and store at -20 °C. Avoid repeated freeze/thaw cycles.
UniProt Primary AC:	P05556 (UniProt , ExPASy)
KEGG:	hsa:3688
String:	9606.ENSP00000379350
Buffer:	PBS, pH 7.4, 150 mM NaCl, 0.02% sodium azide and 50% glycerol.
Note:	This product is for research use only.

For Reference Only