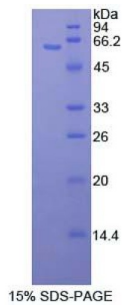


## Human Mitogen Activated Protein Kinase Kinase 4 (MAP2K4) Protein

Catalogue No.: abx068037



SDS-PAGE analysis of Human MAP2K4 Protein.

Recombinant Mitogen Activated Protein Kinase Kinase 4 (MAP2K4) is a recombinant Human protein produced in a Prokaryotic expression system (E. coli).

<b>Target:</b>	Mitogen Activated Protein Kinase Kinase 4 (MAP2K4)
<b>Origin:</b>	Human
<b>Expression:</b>	Recombinant
<b>Tested Applications:</b>	WB, SDS-PAGE
<b>Host:</b>	E. coli
<b>Conjugation:</b>	Unconjugated
<b>Form:</b>	Lyophilized
<b>Purity:</b>	> 95%
<b>Reconstitution:</b>	To keep the original salt concentration, we recommend reconstituting to the original concentration prior to lyophilization (see Concentration) in ddH <sub>2</sub> O. If a lower concentration is required, dilute in PBS, pH 7.4. If a higher concentration is required, the product can be reconstituted directly in PBS, pH 7.4, though please note that this will change the overall salt concentration. The stock concentration should be between 0.1-1.0 mg/ml. Do not vortex.
<b>Storage:</b>	Store at 2-8 °C for up to one month. Store at -80 °C for up to one year. Avoid repeated freeze/thaw cycles.
<b>UniProt Primary AC:</b>	P45985 ( <a href="#">UniProt</a> , <a href="#">ExPASy</a> )
<b>KEGG:</b>	hsa:6416
<b>String:</b>	<a href="#">9606.ENSP00000410402</a>

# Datasheet

Version: 1.0.0  
Revision date: 15 Jan 2025



**Molecular Weight:** Calculated MW: 61.3 kDa

**Sequence Fragment:** Val137-Ser394

**Sequence:** VDEK EQKQLLMDLD VVMRSSDCPY IVQFYGALFR EGDCWICMEL MSTSFDFKFKYK YVYSVLDDVI  
PEEI  
LGKITL ATVKALNHLK ENLKIIHRDI KPSNILLDRS GNIKLCDFGI SGQLVDSIAK TRDAGCRPYM AP  
ERIDPSAS RQGYDVRSRV WSLGITLYEL ATGRFPYPKW NSVFDQLTQV VKGDPPQLSN  
SEEREFSPSF  
INFVNLCLTK DESKRPKYKELLKHPFILMY EERAVEVACY VCKILDQMPA TPSS

**Tag:** N-terminal His tag and GST tag

**Buffer:** Prior to lyophilization: PBS, pH 7.4, containing 0.01% Sarcosyl, 1 mM DTT, 5% Trehalose and Proclin-300.

**Activity:** Not tested

**Concentration:** Prior to lyophilization: 200 µg/ml

**Note:** This product is for research use only.  
Not for human consumption, cosmetic, therapeutic or diagnostic use.

For Reference Only