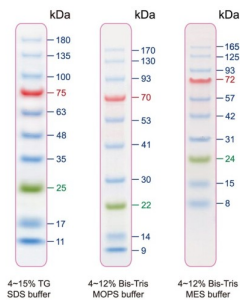


## 11-180 kDa Protein Marker (Stained)

Catalogue No.: abx299708



11-180 kDa Protein Marker contains 10 prestained proteins ranging from 11 to 180 kDa. The 25 kDa protein is covalently coupled to a red dye and the 75 kDa protein is covalently coupled to a green dye. The other 8 proteins are covalently coupled to a blue dye. Coloured protein bands can be seen in SDS-PAGE after transferring to a PDVF, nylon or nitrocellulose membrane.

**Target:** 10-180 kDa Protein Marker (Stained)

**Tested Applications:** WB, SDS-PAGE

**Storage:** Store at 4 °C for up to 3 months. For long-term storage, store at -20 °C. Avoid repeated freeze/thaw cycles.

**Buffer:** 20 mM Tris-phosphate, pH 7.5, 2% SDS, 0.2 mM DTT, 3.6 M Urea, and 15% Glycerol.

**Note:** THIS PRODUCT IS FOR RESEARCH USE ONLY. NOT FOR USE IN DIAGNOSTIC, THERAPEUTIC OR COSMETIC PROCEDURES. NOT FOR HUMAN OR ANIMAL CONSUMPTION.

**Directions for use:** 3 µl/well for clear visualisation during electrophoresis on a 15-well mini-gel  
5 µl/well for clear visualisation during electrophoresis on a 10-well mini-gel  
2-3 µl/well for general Western transferring  
Increase the volume for thicker (> 1.5 mm) or larger gels. Do not heat, dilute or add reducing agents before loading.