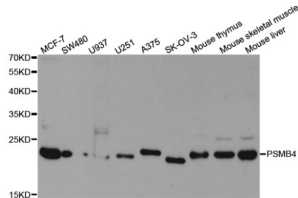
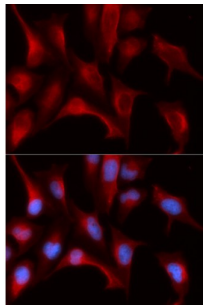


Proteasome Subunit Beta Type 4 (PSMB4) Antibody

Catalogue No.: abx004358



Western blot analysis of extracts of various cell lines, using PSMB4 antibody (abx004358) at 1/1000 dilution.



Immunofluorescence analysis of U2OS cells using PSMB4 antibody (abx004358). Blue: DAPI for nuclear staining.

PSMB4 Antibody is a Rabbit Polyclonal antibody against PSMB4. The proteasome is a multicatalytic proteinase complex with a highly ordered ring-shaped 20S core structure. The core structure is composed of 4 rings of 28 non-identical subunits; 2 rings are composed of 7 alpha subunits and 2 rings are composed of 7 beta subunits. Proteasomes are distributed throughout eukaryotic cells at a high concentration and cleave peptides in an ATP/ubiquitin-dependent process in a non-lysosomal pathway. An essential function of a modified proteasome, the immunoproteasome, is the processing of class I MHC peptides. This gene encodes a member of the proteasome B-type family, also known as the T1B family, that is a 20S core beta subunit.

Target: Proteasome Subunit Beta Type 4 (PSMB4)

Clonality: Polyclonal

Reactivity: Human, Mouse, Rat

Tested Applications: WB

Host: Rabbit

Recommended dilutions: WB: 1/500 - 1/2000. Optimal dilutions/concentrations should be determined by the end user.

Conjugation: Unconjugated

Immunogen: Recombinant fusion protein containing a sequence corresponding to amino acids 1-264 of human PSMB4.

Isotype: IgG

Datasheet

Version: 6.0.0
Revision date: 22 Dec 2024



Form:	Liquid
Purification:	Purified by affinity chromatography.
Storage:	Aliquot and store at -20°C. Avoid repeated freeze/thaw cycles.
UniProt Primary AC:	P28070 (UniProt , ExPASy)
Gene Symbol:	PSMB4
GeneID:	5692
OMIM:	602177
NCBI Accession:	NP_002787.2
HGNC:	9541
KEGG:	hsa:5692
Ensembl:	ENSG00000159377
String:	9606.ENSP00000290541
Molecular Weight:	Calculated MW: 29 kDa Observed MW: 22 kDa
Buffer:	PBS, pH 7.3, containing 0.02% sodium azide, 50% glycerol.
Concentration:	> 0.2 mg/ml
Note:	This product is for research use only.

For Reference Only