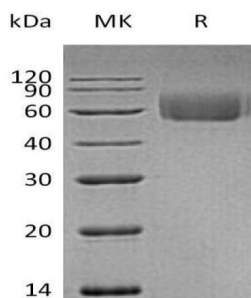


## Human Interleukin 1 Receptor Like Protein 2 (IL1RL2) Protein (Active)

Catalogue No.: abx690705



SDS-PAGE analysis of recombinant Human Interleukin 1 Receptor Like Protein 2 (IL1RL2) Protein.

Human IL-1 Receptor-Like 2 Protein is a recombinant protein from Human produced in Human Cells. Recombinant Human Interleukin-1 receptor-like 2 is produced by our Mammalian expression system and the target gene encoding Asp20-Tyr337 is expressed with a 6His tag at the C-terminus.

**Target:** IL-1 Receptor-Like 2

**Origin:** Human

**Expression:** Recombinant

**Tested Applications:** SDS-PAGE

**Host:** Human

**Form:** Lyophilized

**Purity:** > 95% (SDS-PAGE)

**Reconstitution:** Reconstitute in sterile H<sub>2</sub>O to prepare a stock solution of concentration 0.25 mg/ml. Do not vortex.

**Storage:** Store lyophilized below -20 °C. After reconstitution, store at 4 °C for up to 1 week, or below -20°C for 3 months. Avoid repeated freeze/thaw cycles.

**UniProt Primary AC:** Q9HB29 ([UniProt](#), [ExpASY](#))

**String:** [9606.ENSP00000264257](#)

**Molecular Weight:** Calculated MW: 37 kDa  
Observed MW: 60 kDa

**Sequence Fragment:** Asp20-Tyr337

**Tag:** C-terminal 6 His tag

# Datasheet

Version: 3.0.0

Revision date: 12 Mar 2025



**Buffer:** PBS, pH7.4.

**Activity:** Active

**Endotoxin Level:** < 1.0 EU per  $\mu\text{g}$  as determined by the LAL method.

**Note:** THIS PRODUCT IS FOR RESEARCH USE ONLY. NOT FOR USE IN DIAGNOSTIC, THERAPEUTIC OR COSMETIC PROCEDURES. NOT FOR HUMAN OR ANIMAL CONSUMPTION.

For Reference Only