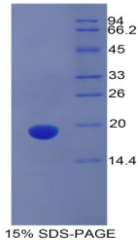


Mouse Protein C Receptor, Endothelial (PROCR) Protein

Catalogue No.: abx068735



SDS-PAGE analysis of Mouse PROCR Protein.

Recombinant Protein C Receptor, Endothelial (PROCR) is a recombinant Mouse protein produced in a Prokaryotic expression system (E. coli).

Target: Protein C Receptor, Endothelial (PROCR)

Origin: Mouse

Expression: Recombinant

Tested Applications: WB, SDS-PAGE

Host: E. coli

Conjugation: Unconjugated

Form: Lyophilized

Purity: > 95%

Reconstitution: To keep the original salt concentration, we recommend reconstituting to the original concentration prior to lyophilization (see Concentration) in ddH₂O. If a lower concentration is required, dilute in PBS, pH 7.4. If a higher concentration is required, the product can be reconstituted directly in PBS, pH 7.4, though please note that this will change the overall salt concentration. The stock concentration should be between 0.1-1.0 mg/ml. Do not vortex.

Storage: Store at 2-8 °C for up to one month. Store at -80 °C for up to one year. Avoid repeated freeze/thaw cycles.

UniProt Primary AC: Q64695 ([UniProt](#), [ExPASy](#))

KEGG: mmu:19124

String: [10090.ENSMUSP00000029140](https://string-db.org/10090.ENSMUSP00000029140)

Datasheet

Version: 1.0.0
Revision date: 19 Feb 2025



Molecular Weight: Calculated MW: 16.9 kDa

Sequence Fragment: Ile32-Phe167

Sequence: ISYFQDNHH VRHQGNASLG KLLTHTLEGP SQNVTLQLQ PWQDPESWER TESGLQIYLT
QFESLVKLVY
RERKENVFFP LTVSCSLGCE LPEEEEEEGSE PHVFFDVAVN GSAFVSFRPK TAVWVSGSQE
PSKAANF

Tag: N-terminal His tag

Buffer: Prior to lyophilization: PBS, pH 7.4, containing 0.01% Sarcosyl, 1 mM DTT, 5% Trehalose and Proclin-300.

Activity: Not tested

Concentration: Prior to lyophilization: 200 µg/ml

Note: This product is for research use only.
Not for human consumption, cosmetic, therapeutic or diagnostic use.

For Reference Only