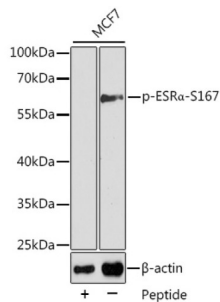


## ESR1 (pS167) Antibody

Catalogue No.: abx000396



Western blot analysis of lysates from MCF7 cells using Phospho-ESR $\alpha$ -S167 Antibody. Secondary antibody: HRP-conjugated Goat anti-Rabbit IgG (H+L) at 1/10000 dilution. Lysates/proteins: 25  $\mu$ g per lane. Blocking buffer: 3% BSA.

ESR1 (pS167) Antibody is a Rabbit Polyclonal antibody against ESR1 (pS167). This gene encodes an estrogen receptor, a ligand-activated transcription factor composed of several domains important for hormone binding, DNA binding, and activation of transcription. The protein localizes to the nucleus where it may form a homodimer or a heterodimer with estrogen receptor 2. Estrogen and its receptors are essential for sexual development and reproductive function, but also play a role in other tissues such as bone. Estrogen receptors are also involved in pathological processes including breast cancer, endometrial cancer, and osteoporosis. Alternative splicing results in several transcript variants, which differ in their 5' UTRs and use different promoters.

<b>Target:</b>	ESR1 (pS167)
<b>Clonality:</b>	Polyclonal
<b>Reactivity:</b>	Human
<b>Tested Applications:</b>	ELISA, WB, IF/ICC
<b>Host:</b>	Rabbit
<b>Recommended dilutions:</b>	ELISA: 1 $\mu$ g/ml, WB: 1/500 - 1/2000, IF/ICC: 1/100 - 1/200. Optimal dilutions/concentrations should be determined by the end user.
<b>Conjugation:</b>	Unconjugated
<b>Immunogen:</b>	A synthetic phosphorylated peptide around S167 of human Estrogen Receptor alpha (ESR1).
<b>Isotype:</b>	IgG
<b>Form:</b>	Liquid
<b>Purification:</b>	Purified by affinity chromatography.
<b>Storage:</b>	Aliquot and store at -20°C. Avoid repeated freeze/thaw cycles.
<b>UniProt Primary AC:</b>	P03372 ( <a href="#">UniProt</a> , <a href="#">ExpASY</a> )

# Datasheet

Version: 3.0.0  
Revision date: 31 Jan 2025



**Gene Symbol:** ESR1

**GeneID:** [2099](#)

**NCBI Accession:** NP\_000116.2

**KEGG:** hsa:2099

**String:** [9606.ENSP00000405330](#)

**Molecular Weight:** Calculated MW: 66 kDa  
Observed MW: 66 kDa

**Buffer:** PBS, pH 7.3, containing 0.01% thimerosal, 50% glycerol.

**Concentration:** > 0.2 mg/ml

**Note:** This product is for research use only.

For Reference Only