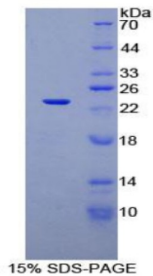


Rat Signaling Threshold Regulating Transmembrane Adaptor 1 (SIT1) Protein

Catalogue No.: abx069095



SDS-PAGE analysis of Rat SIT1 Protein.

Signaling Threshold Regulating Transmembrane Adaptor 1 (SIT1) is a recombinant Rat protein produced in a Prokaryotic expression system (E. coli).

Target:	Signaling Threshold Regulating Transmembrane Adaptor 1 (SIT1)
Origin:	Rat
Expression:	Recombinant
Tested Applications:	WB, SDS-PAGE
Host:	E. coli
Conjugation:	Unconjugated
Form:	Lyophilized
Purity:	> 97%
Reconstitution:	To keep the original salt concentration, we recommend reconstituting to the original concentration prior to lyophilization (see Concentration) in ddH ₂ O. If a lower concentration is required, dilute in PBS, pH 7.4. If a higher concentration is required, the product can be reconstituted directly in PBS, pH 7.4, though please note that this will change the overall salt concentration. The stock concentration should be between 0.1-1.0 mg/ml. Do not vortex.
Storage:	Store at 2-8 °C for up to one month. Store at -80 °C for up to one year. Avoid repeated freeze/thaw cycles.
UniProt Primary AC:	Q5M869 (UniProt , ExpASY)
KEGG:	no:500449

Datasheet

Version: 1.0.0
Revision date: 20 Jan 2025



String: [10116.ENSARNOP00000036171](#)

Molecular Weight: Calculated MW: 22.8 kDa

Sequence Fragment: Ser2-Pro175

Sequence:
SRENNCTTA DLAWGIPSIT QAWGLWALFG VVTMLLLISL AALLSQWTRG RRRTQEEQGP
PSGRSVEEVP
LYGNLHYLQT GRLSEESRSE EQDPSSGGLA RGAEATCYT SLQLRPAQGR IPSSGTPIKY
CEVLDSE
PK PQASGPEPEL YASVCAQTRR ARASFPDQAY ANSQP

Tag: N-terminal His tag

Buffer: Prior to lyophilization: PBS, pH 7.4, containing 0.01% Sarcosyl, 1 mM DTT, 5% Trehalose and Proclin-300.

Activity: Not tested

Concentration: Prior to lyophilization: 200 µg/ml

Note: This product is for research use only.
Not for human consumption, cosmetic, therapeutic or diagnostic use.

For Reference Only