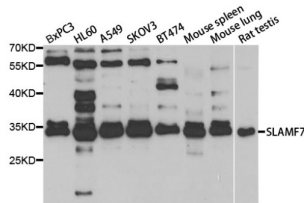


Signaling Lymphocytic Activation Molecule Family, Member 7 (SLAMF7) Antibody

Catalogue No.: abx004430



Western blot analysis of extracts of various cell lines, using SLAMF7 antibody (abx004430) at 1/1000 dilution.

SLAMF7 Antibody is a Rabbit Polyclonal antibody against SLAMF7.

Target:	Signaling Lymphocytic Activation Molecule Family, Member 7 (SLAMF7)
Clonality:	Polyclonal
Reactivity:	Human, Mouse, Rat
Tested Applications:	WB
Host:	Rabbit
Recommended dilutions:	WB: 1/1000 - 1/5000. Optimal dilutions/concentrations should be determined by the end user.
Conjugation:	Unconjugated
Immunogen:	Recombinant fusion protein containing a sequence corresponding to amino acids 23-226 of human SLAMF7.
Isotype:	IgG
Form:	Liquid
Purification:	Purified by affinity chromatography.
Storage:	Aliquot and store at -20°C. Avoid repeated freeze/thaw cycles.
UniProt Primary AC:	Q9NQ25 (UniProt , ExPASy)
Gene Symbol:	SLAMF7

Datasheet

Version: 2.0.0
Revision date: 07 Oct 2024



GeneID: [57823](#)

NCBI Accession: NP_067004.3

String: [9606.ENSP00000357022](#)

Molecular Weight: Calculated MW: 37 kDa
Observed MW: 25-80 kDa

Buffer: PBS, pH 7.3, containing 0.01% thimerosal, 50% glycerol.

Concentration: > 0.2 mg/ml

Note: This product is for research use only.

For Reference Only