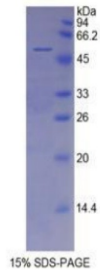


## Rat Toll Like Receptor 2 (TLR2) Protein

Catalogue No.: abx069359



SDS-PAGE analysis of Rat Toll Like Receptor 2 Protein.

Recombinant Toll Like Receptor 2 (TLR2) is a recombinant Rat protein produced in a Prokaryotic expression system (E. coli).

<b>Target:</b>	Toll Like Receptor 2 (TLR2)
<b>Origin:</b>	Rat
<b>Expression:</b>	Recombinant
<b>Tested Applications:</b>	WB, SDS-PAGE
<b>Host:</b>	E. coli
<b>Conjugation:</b>	Unconjugated
<b>Form:</b>	Lyophilized
<b>Purity:</b>	> 95%
<b>Reconstitution:</b>	To keep the original salt concentration, we recommend reconstituting to the original concentration prior to lyophilization (see Concentration) in ddH <sub>2</sub> O. If a lower concentration is required, dilute in PBS, pH 7.4. If a higher concentration is required, the product can be reconstituted directly in PBS, pH 7.4, though please note that this will change the overall salt concentration. The stock concentration should be between 0.1-1.0 mg/ml. Do not vortex.
<b>Storage:</b>	Store at 2-8 °C for up to one month. Store at -80 °C for up to one year. Avoid repeated freeze/thaw cycles.
<b>UniProt Primary AC:</b>	E9PTD9 ( <a href="#">UniProt</a> , <a href="#">ExPASy</a> )
<b>String:</b>	<a href="#">10116.ENSRNOP00000013025</a>
<b>Molecular Weight:</b>	Calculated MW: 51.8 kDa

# Datasheet

Version: 1.0.0  
Revision date: 21 Nov 2024



**Sequence Fragment:** Cys595-Thr760

**Sequence:** CCALLL LILLGALCY HFHGLWYLRM MWAWLRAK RK PKKAPCRDLC YDAFVSYSEQ  
DSYWVENLMV QQ  
LENSDPPF KLCLHKRDFV PGKWIIDNII DSIEKSHKTV FVLSSENFVRS EWCKYELDFS HFRLFDENND  
AAILVLEPI EKKAIPQRFC KLRKIMNTKT

**Tag:** N-terminal His tag and GST tag

**Buffer:** Prior to lyophilization: PBS, pH 7.4, containing 0.01% Sarcosyl, 1 mM DTT, 5% Trehalose and Proclin-300.

**Activity:** Not tested

**Concentration:** Prior to lyophilization: 200 µg/ml

**Note:** This product is for research use only.  
Not for human consumption, cosmetic, therapeutic or diagnostic use.

For Reference Only