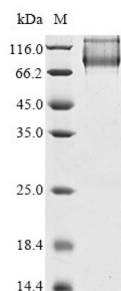


Human Toll Like Receptor 8 (TLR8) Protein

Catalogue No.: abx600063



Discontinuous SDS-PAGE (reduced) analysis of recombinant Human TLR8 Protein, with 5% enrichment gel and 15% separation gel (Tris-Glycine gel).

Human Toll Like Receptor 8 (TLR8) Protein is a Human recombinant protein produced in Yeast.

Target:	Human Toll Like Receptor 8 (TLR8)
Origin:	Human
Expression:	Recombinant
Tested Applications:	SDS-PAGE
Host:	Yeast
Form:	Lyophilized
Purity:	> 90% (SDS-PAGE)
Purification:	Affinity purified using IMAC.
Reconstitution:	Reconstitute in deionized sterile water to a concentration of 0.1-1.0 mg/ml. It is recommended to add glycerol to a final glycerol concentration of 5-50%.
Storage:	Store lyophilized between -20°C and -80°C. After reconstitution, store between 2°C and 8°C for up to one week. Avoid repeated freeze/thaw cycles.
Validity:	6 months in liquid form, or 12 months in lyophilized form.
UniProt Primary AC:	Q9NR97 (UniProt , ExPASy)
Gene Symbol:	TLR8
GeneID:	51311
OMIM:	300366

Datasheet

Version: 2.0.0
Revision date: 03 Dec 2024



NCBI Accession: NP_057694.2

HGNC: 15632

Ensembl: ENST00000218032, ENSP00000218032, ENSG00000101916 [Q9NR97-1], ENST00000311912, ENSP00000312082, ENSG00000101916 [Q9NR97-2]

String: [9606.ENSP00000312082](#)

Molecular Weight: Calculated MW: 93.5 kDa
Observed MW (SDS-PAGE): 93 kDa

Sequence Fragment: 27-827 AA.

Sequence: EENF SRSYPCDEKK QNDSVIAECS NRRLQVEPQT VGKYVTELDL SDNFITHITN ESFQGLQNLT
KINL
NHNPV QHQNGNPGIQ SNGLNITDGA FLNLKNLREL LLEDNQLPQI PSQLPESL TE LSLIQNNIYN IT
KEGISRLI NLKNLYLAWN CYFNKVCEKT NIEDGVFETL TNLELLSLSF NSLSHVPPKL PSSLRKLFSL
NTQIKYISEE DFKGLINLTL LDLSGNCPRC FNAPFCVPC DGGASINIDR FAFQNLTLQR YLNLSSSTL
R KINAAWFKNM PHLKVLDFE NYLVGEIASG AFLTMLPRLE ILDLFSNYIK GSYQPHINIS RNFSKLL
SLR ALHLRGYVFQ ELREDDFQPL MQLPNLSTIN LGINFIKQID FKLQNFNSNL EIIYLSNRI SPLVK
DTRQS YANSSSFQRH IRKRRSTDFE FDPHSNFYHF TRPLIKPQCA AYGKALDLSL NSIFFIGPNQ
FEN
LPDIACL NLSANSNAQV LSGTEFSAIP HVKYLDLTNN RLDFDNASAL TELSDLEVL DLSYNSHYFRI A
GVTHHLEFI QNFTNLKVLN LSHNNIYTLT DKYNLESKSL VELVFSGNRL DILWNNDDNR YISIFKGLKN
LTRLDSLNR LKHIPNEAFL NLPASLTELH INDNMLKFFN WTLLQQFPRL ELLDLRGNKL LFLTDSLS
DF TSSLRLLLL HNRISHLPSG FLSEVSSLKH LDLSSNLLKT INKSALETKT TTKLSMLELH GNPFE
TCDI GDFRRWMDEH LNVKIPRLVD VICASPGDQR GKSIVSLELT TCVSDVT

Tag: N-terminal 6 His tag

Buffer: Prior to lyophilization: 20 mM Tris-HCl, 0.5 M NaCl, 6% Trehalose, pH 8.0.

Note: This product is for research use only.
Not for human consumption, cosmetic, therapeutic or diagnostic use.