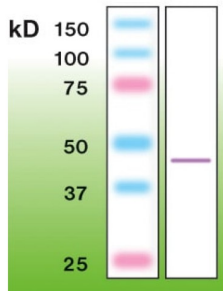


Beta Actin (ACTB) Antibody

Catalogue No.: abx227035



Western blot of actin in mouse brain crude lysate (50 µg protein loaded).

Beta Actin (ACTB) Antibody (FITC) is a Rabbit Monoclonal antibody for the detection of beta-Actin.

Target:	Beta Actin (ACTB)
Clonality:	Monoclonal
Clone:	X592
Reactivity:	Human, Mouse, Rat
Tested Applications:	ELISA, WB, IP
Host:	Rabbit
Recommended dilutions:	Optimal dilutions/concentrations should be determined by the end user.
Conjugation:	Unconjugated
Immunogen:	Synthetic peptide derived from the C-terminal region of human beta-actin.
Epitope Region:	Ser358-Ser368
Isotype:	IgG
Form:	Liquid
Purification:	Purified from rabbit antiserum by proprietary techniques.
Storage:	Aliquot and store at -20°C. Avoid repeated freeze/thaw cycles.
UniProt Primary AC:	P60709 (UniProt , ExPASy) P60710 (UniProt , ExPASy) P60711 (UniProt , ExPASy)

Datasheet

Version: 2.0.0
Revision date: 31 Dec 2024



Buffer: 20 mM Tris-HCl, pH 8.0, containing 10 mg/ml BSA and 0.05% NaN₃.

Note: This product is for research use only.

For Reference Only