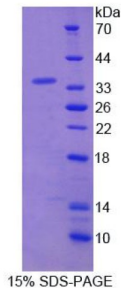


# Rat Vascular Endothelial Growth Factor Receptor 2 / VEGFR2 (KDR) Protein

Catalogue No.: abx069652



SDS-PAGE analysis of recombinant Rat VEGFR2 Protein.

Rat Vascular Endothelial Growth Factor Receptor 2 / VEGFR2 (KDR) is a recombinant Rat protein produced in a Prokaryotic expression system (E. coli).

This protein is the immunogen for the following antibodies: [abx104459](#), [abx273247](#)

**Target:** Vascular Endothelial Growth Factor Receptor 2 / VEGFR2 (KDR)

**Origin:** Rat

**Tested Applications:** WB, SDS-PAGE

**Host:** E. coli

**Conjugation:** Unconjugated

**Form:** Lyophilized

**Purity:** > 90%

**Reconstitution:** To keep the original salt concentration, we recommend reconstituting to the original concentration prior to lyophilization (see Concentration) in ddH<sub>2</sub>O. If a lower concentration is required, dilute in PBS, pH 7.4. If a higher concentration is required, the product can be reconstituted directly in PBS, pH 7.4, though please note that this will change the overall salt concentration. The stock concentration should be between 0.1-1.0 mg/ml. Do not vortex.

**Storage:** Store at 2-8 °C for up to one month. Store at -80 °C for up to one year. Avoid repeated freeze/thaw cycles.

**UniProt Primary AC:** O08775 ([UniProt](#), [ExPASy](#))

**KEGG:** rno:25589

# Datasheet

Version: 2.0.0  
Revision date: 13 Mar 2025



**String:** [10116.ENSARNOP00000066886](#)

**Molecular Weight:** Calculated MW: 34.8 kDa  
Observed MW (SDS-PAGE): 35 kDa

**Sequence Fragment:** Asn46-Thr320

**Sequence:** NTTLQ ITCRGQRDLQ WLWPNTPRDS EERVLVTECG DSIFCKTLTV PRVVGNDTGA YKCFYRDTDV  
SSI  
VYVYVQD HRSPFIASVS DEHGIVYITE NKNKTVVIPC RGSISNLNVS LCARYPEKRF VPDGNRISWD  
S  
EKGFTIPSY MISYAGMVFC EAKINDETYQ SIMYIVLVVG YRIYDVVLS PHEIELSAGE KLVLNCTART  
ELNVGLDFSW QFPSSKHQHK KIVNRDVKSL PGTVAKMFLS TLTIDSVTKS DQGEYTCTAY  
SGLMTKKN  
KT

**Tag:** N-terminal His tag

**Buffer:** Prior to lyophilization: PBS, pH 7.4, containing 0.01% Sarcosyl, 1 mM DTT, 5% Trehalose and Proclin-300.

**Activity:** Not tested

**Concentration:** Prior to lyophilization: 200 µg/ml

**Note:** THIS PRODUCT IS FOR RESEARCH USE ONLY. NOT FOR USE IN DIAGNOSTIC, THERAPEUTIC OR COSMETIC PROCEDURES. NOT FOR HUMAN OR ANIMAL CONSUMPTION.

For Reference Only