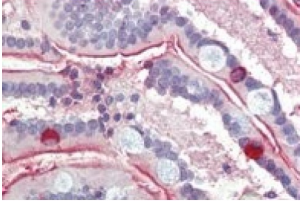


## Sodium/Glucose Cotransporter 1 (SLC5A1) Antibody

Catalogue No.: abx433663



IHC-P analysis of Human small intestine tissue, using Sodium/Glucose Cotransporter 1 (SLC5A1) Antibody (3.8 µg/ml).

Sodium/Glucose Cotransporter 1 (SLC5A1) Antibody is a Goat Polyclonal against Sodium/Glucose Cotransporter 1 (SLC5A1).

<b>Target:</b>	Sodium/Glucose Cotransporter 1 (SLC5A1)
<b>Clonality:</b>	Polyclonal
<b>Reactivity:</b>	Human, Mouse
<b>Tested Applications:</b>	P-ELISA, WB, IHC, IF/ICC
<b>Host:</b>	Goat
<b>Recommended dilutions:</b>	P-ELISA: 1/4000. Optimal dilutions/concentrations should be determined by the end user.
<b>Conjugation:</b>	Unconjugated
<b>Immunogen:</b>	<a href="#">abx615890</a> - C-KETIEIETQVPEKKK
<b>Storage:</b>	Aliquot and store at -20°C. Avoid repeated freeze/thaw cycles.
<b>UniProt Primary AC:</b>	P13866 ( <a href="#">UniProt</a> , <a href="#">ExpASY</a> )
<b>Gene Symbol:</b>	SLC5A1
<b>GeneID:</b>	<a href="#">6523</a>
<b>OMIM:</b>	<a href="#">182380</a>
<b>NCBI Accession:</b>	NP_000334.1
<b>HGNC:</b>	11036

# Datasheet

Version: 2.0.0

Revision date: 25 Nov 2024



**KEGG:** hsa:6523

**Ensembl:** ENSG00000100170

**Note:** This product is for research use only.

For Reference Only