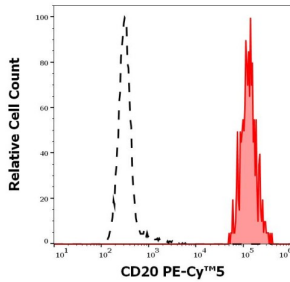
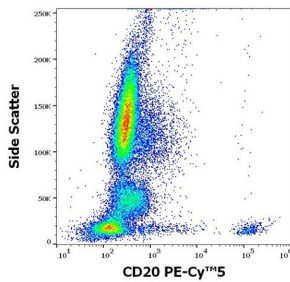


B-Lymphocyte Antigen CD20 (MS4A1) Antibody (PE / Cyanine 5)

Catalogue No.: abx347051



Flow cytometry analysis of human peripheral whole blood with CD20 antibody conjugated to PE / Cyanine 5 (4 µl reagent / 100 µl of peripheral whole blood).



Flow cytometry analysis of human peripheral whole blood with CD20 antibody conjugated to PE / Cyanine 5 (4 µl reagent / 100 µl of peripheral whole blood).

B-Lymphocyte Antigen CD20 (MS4A1) Antibody (PE / Cyanine 5) is a Mouse Monoclonal against B-Lymphocyte Antigen CD20 (MS4A1).

Target:	B-Lymphocyte Antigen CD20 (MS4A1)
Clonality:	Monoclonal
Clone:	C333
Reactivity:	Human, Monkey
Tested Applications:	FCM
Host:	Mouse
Conjugation:	PE / Cyanine 5
Immunogen:	Human tonsillar B cells.
Isotype:	IgG _{2b} Kappa
Storage:	Store in the dark at 2-8°C. Avoid exposure to light. Do not freeze.

Datasheet

Version: 2.0.0
Revision date: 23 Feb 2025



UniProt Primary AC:	P11836 (UniProt , ExPASy)
Gene Symbol:	CD20
GeneID:	931
Buffer:	Stabilizing PBS solution containing 15 mM sodium azide.
Note:	This product is for research use only.

For Reference Only