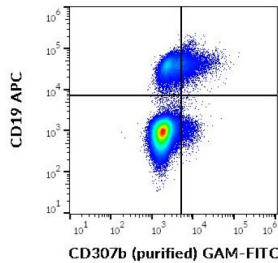


Fc Receptor-Like Protein 2 (FCRL2) Antibody

Catalogue No.: abx347159



Flow cytometry multicolor surface staining of human lymphocytes stained using APC-conjugated CD19 antibody ([abx139185](#), 10 µl reagent / 100 µl of peripheral whole blood) and FCRL2/CD307b antibody (0.5 µg/ml with FITC-conjugated goat anti-mouse antibody).

Fc Receptor-Like Protein 2 (FCRL2) Antibody is a Mouse Monoclonal Antibody against Fc Receptor-Like Protein 2 (FCRL2).

Target:	Fc Receptor-Like Protein 2 (FCRL2)
Clonality:	Monoclonal
Clone:	Y255
Reactivity:	Human
Tested Applications:	FCM
Host:	Mouse
Recommended dilutions:	FCM: 1-4 µg/ml. Optimal dilutions/concentrations should be determined by the end user.
Immunogen:	DNA-immunization followed by a boost with CD307b transfected cells.
Isotype:	IgG _{2a} Kappa
Purification:	Purified by Protein A affinity chromatography.
Storage:	Store at 2-8°C. Do not freeze.
UniProt Primary AC:	Q96LA5 (UniProt , ExpASY)
Gene Symbol:	FCRL2
GeneID:	79368
Buffer:	PBS, pH 7.4, 15 mM sodium azide.

Datasheet

Version: 4.0.0
Revision date: 08 Feb 2025



Specificity: The mouse monoclonal antibody recognizes an extracellular epitope of CD307b, a transmembrane glycoprotein expressed mainly in mature and memory B cells.

Concentration: 1 mg/ml

Note: This product is for research use only.

For Reference Only