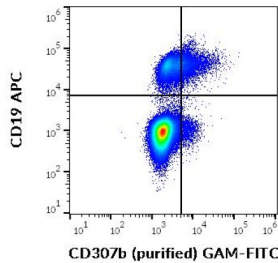


Fc Receptor-Like Protein 2 (FCRL2) Antibody

Catalogue No.: abx347159



Flow cytometry multicolor surface staining of human lymphocytes stained using APC-conjugated CD19 antibody ([abx139185](#), 10 µl reagent / 100 µl of peripheral whole blood) and FCRL2/CD307b antibody (0.5 µg/ml with FITC-conjugated goat anti-mouse antibody).

Fc Receptor-Like Protein 2 (FCRL2) Antibody is a Mouse Monoclonal Antibody against Fc Receptor-Like Protein 2 (FCRL2).

Target: Fc Receptor-Like Protein 2 (FCRL2)

Clonality: Monoclonal

Clone: Y255

Reactivity: Human

Tested Applications: FCM

Host: Mouse

Recommended dilutions: FCM: 1-4 µg/ml. Optimal dilutions/concentrations should be determined by the end user.

Immunogen: DNA-immunization followed by a boost with CD307b transfected cells.

Isotype: IgG_{2a} Kappa

Purification: Purified by Protein A affinity chromatography.

Storage: Store at 2-8°C. Do not freeze.

UniProt Primary AC: Q96LA5 ([UniProt](#), [ExpASY](#))

Gene Symbol: FCRL2

GeneID: [79368](#)

Buffer: PBS, pH 7.4, 15 mM sodium azide.

Datasheet

Version: 5.0.0

Revision date: 12 Mar 2025



Specificity: The mouse monoclonal antibody recognizes an extracellular epitope of CD307b, a transmembrane glycoprotein expressed mainly in mature and memory B cells.

Concentration: 1 mg/ml

Note: THIS PRODUCT IS FOR RESEARCH USE ONLY. NOT FOR USE IN DIAGNOSTIC, THERAPEUTIC OR COSMETIC PROCEDURES. NOT FOR HUMAN OR ANIMAL CONSUMPTION.

For Reference Only