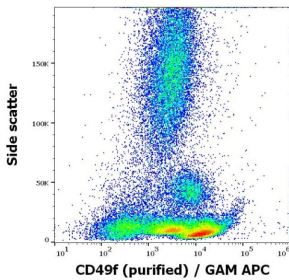
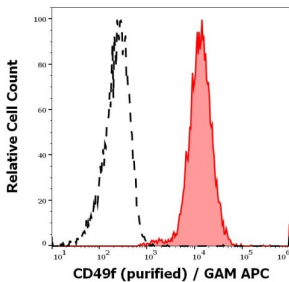


Integrin subunit alpha 6 (CD49f) Antibody

Catalogue No.: abx347207



Flow cytometry surface staining of Human peripheral whole blood using CD49f antibody (1.7 µg/ml).



Flow cytometry analysis showing separation of stained Human blood thrombocytes (red-filled) using CD49f antibody (1.7 µg/ml) from unstained Human blood thrombocytes (black-dashed).

Integrin subunit alpha 6 (CD49f) Antibody is a rat monoclonal antibody against Integrin subunit alpha 6 (CD49f).

Target:	Integrin subunit alpha 6 (CD49f)
Clonality:	Monoclonal
Clone:	R520
Reactivity:	Monkey, Horse, Pig, Rabbit, Cow, Dog, Cat, Human, Sheep, Mouse
Tested Applications:	IHC, IF/ICC, FCM, IP
Host:	Rat
Recommended dilutions:	FCM: 1-4 µg/ml. Optimal dilutions/concentrations should be determined by the end user.
Conjugation:	Unconjugated
Immunogen:	Mouse mammary tumor cells
Isotype:	IgG _{2a}
Form:	Lyophilized

Datasheet

Version: 1.0.0
Revision date: 11 Feb 2025



Purification:	Purified by protein-G affinity chromatography.
Storage:	Aliquot and store at 2°C to 8°C upon receipt. Do not freeze.
UniProt Primary AC:	P23229 (UniProt , ExPASy)
Gene Symbol:	ITGA6
GeneID:	3655
Buffer:	Prior to lyophilization: PBS, pH 7.4 with 15 mM sodium azide.
Specificity:	Recognizes an extracellular epitope of CD49f protein.
Concentration:	Prior to lyophilization: 1 mg/ml
Note:	This product is for research use only.

For Reference Only