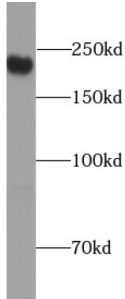
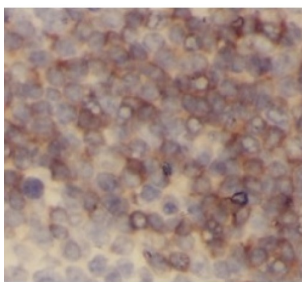


Receptor-Type Tyrosine-Protein Phosphatase C / CD45 (PTPRC) Antibody

Catalogue No.: abx239868



WB analysis of Raji cells, using CD45 antibody (1/1000 dilution).



IHC-P analysis of human tonsillitis tissue, using CD45 antibody (1/300. heat mediated antigen retrieved with Tris-EDTA buffer (pH9) . dilution).

Receptor-Type Tyrosine-Protein Phosphatase C / CD45 (PTPRC) Antibody is a Mouse Monoclonal antibody for the detection of CD45.

CD45, also known as leukocyte common antigen (LCA), B220, and T200, is a 180-240 kDa single chain type I membrane glycoprotein. It is a tyrosine phosphatase expressed on the plasma membrane of all hematopoietic cells, except erythrocytes and platelets. CD45 is a signaling molecule that regulates a variety of cellular processes including cell growth, differentiation, cell cycle, and oncogenic transformation.

Target:	Receptor-Type Tyrosine-Protein Phosphatase C / CD45 (PTPRC)
Clonality:	Monoclonal
Reactivity:	Human, Pig
Tested Applications:	ELISA, WB, IHC, FCM
Host:	Mouse
Recommended dilutions:	WB: 1/1000 - 1/10000, IHC: 1/20 - 1/200. Optimal dilutions/concentrations should be determined by the end user.
Conjugation:	Unconjugated
Immunogen:	protein tyrosine phosphatase, receptor type, C

Datasheet

Version: 1.0.0
Revision date: 12 Mar 2025



Isotype:	IgG _{2a}
Form:	Liquid
Purity:	≥ 95% (SDS-PAGE)
Purification:	Purified by Protein A and Protein G affinity chromatography.
Storage:	Aliquot and store at -20°C. Avoid repeated freeze/thaw cycles.
Validity:	12 months.
UniProt Primary AC:	P08575 (UniProt , ExPASy)
Gene Symbol:	PTPRC
GeneID:	5788
OMIM:	126200
HGNC:	9666
KEGG:	hsa:5788
Ensembl:	ENSG00000081237
String:	9606.ENSP00000411355
Molecular Weight:	Observed MW: 180-220 kDa
Buffer:	PBS, pH 7.3, with 0.02% sodium azide and 50% glycerol.
Concentration:	2 mg/ml
Note:	THIS PRODUCT IS FOR RESEARCH USE ONLY. NOT FOR USE IN DIAGNOSTIC, THERAPEUTIC OR COSMETIC PROCEDURES. NOT FOR HUMAN OR ANIMAL CONSUMPTION.