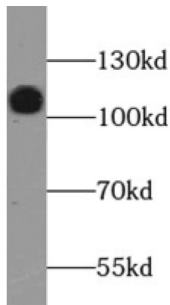
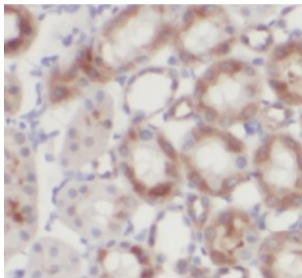


## Lysosomal Associated Membrane Protein 2 (LAMP2) Antibody

Catalogue No.: abx239891



WB analysis of HEK-293 cells, using LAMP2 antibody (1/1000 dilution).



IHC-P analysis of human kidney tissue, using LAMP2 antibody (1/200 dilution).

Lysosomal Associated Membrane Protein 2 (LAMP2) Antibody is a Mouse Monoclonal antibody for the detection of LAMP2.

Lysosomal-associated membrane protein 2 (LAMP2, **synonyms**: LAMPB, CD107b) is a member of a family of membrane glycoproteins. This glycoprotein provides selectins with carbohydrate ligands. LAMP2 may play a role in tumor cell metastasis. It may also function in the protection, maintenance, and adhesion of the lysosome. Prior to posttranslational modification, LAMP2 is a ~45 kDa polypeptide. Mature, functional LAMP2 is extensively glycosylated with a variety of different N linked and O linked oligosaccharides.

**Target:** Lysosomal Associated Membrane Protein 2 (LAMP2)

**Clonality:** Monoclonal

**Reactivity:** Human

**Tested Applications:** ELISA, WB, IHC

**Host:** Mouse

**Recommended dilutions:** WB: 1/500 - 1/2000, IHC: 1/50 - 1/500. Optimal dilutions/concentrations should be determined by the end user.

**Conjugation:** Unconjugated

**Immunogen:** lysosomal-associated membrane protein 2

# Datasheet

Version: 1.0.0  
Revision date: 23 Feb 2025



<b>Isotype:</b>	IgA
<b>Form:</b>	Liquid
<b>Purity:</b>	≥ 95% (SDS-PAGE)
<b>Purification:</b>	Purified by Protein A and Protein G affinity chromatography.
<b>Storage:</b>	Aliquot and store at -20°C. Avoid repeated freeze/thaw cycles.
<b>Validity:</b>	12 months.
<b>UniProt Primary AC:</b>	P13473 ( <a href="#">UniProt</a> , <a href="#">ExPASy</a> )
<b>Gene Symbol:</b>	LAMP2
<b>GeneID:</b>	<a href="#">3920</a>
<b>OMIM:</b>	<a href="#">300257</a>
<b>HGNC:</b>	6501
<b>KEGG:</b>	hsa:3920
<b>Ensembl:</b>	ENSG00000005893
<b>String:</b>	<a href="#">9606.ENSP00000408411</a>
<b>Molecular Weight:</b>	Observed MW: 120 kDa
<b>Buffer:</b>	PBS, pH 7.3, with 0.02% sodium azide and 50% glycerol.
<b>Concentration:</b>	2 mg/ml
<b>Note:</b>	This product is for research use only.