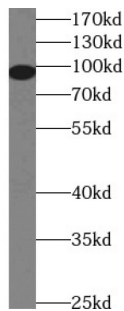


Toll Like Receptor 2 (TLR2) Antibody

Catalogue No.: abx239892



WB analysis of THP-1 cells, using TLR2 antibody (1/2000 dilution).

Toll Like Receptor 2 (TLR2) Antibody is a Mouse Monoclonal antibody for the detection of TLR2.

Target:	Toll Like Receptor 2 (TLR2)
Clonality:	Monoclonal
Reactivity:	Human
Tested Applications:	ELISA, WB
Host:	Mouse
Recommended dilutions:	WB: 1/500 - 1/2000. Optimal dilutions/concentrations should be determined by the end user.
Conjugation:	Unconjugated
Immunogen:	toll-like receptor 2
Isotype:	IgG _{2a}
Form:	Liquid
Purity:	≥ 95% (SDS-PAGE)
Purification:	Purified by Protein A and Protein G affinity chromatography.
Storage:	Aliquot and store at -20°C. Avoid repeated freeze/thaw cycles.
Validity:	12 months.
UniProt Primary AC:	O60603 (UniProt , ExPASy)

Datasheet

Version: 2.0.0
Revision date: 18 Dec 2024



Gene Symbol: TLR2

GeneID: [7097](#)

OMIM: [246300](#)

NCBI Accession: NP_003255.2

HGNC: 11848

KEGG: hsa:7097

Ensembl: ENSG00000137462

String: [9606.ENSP00000260010](#)

Molecular Weight: Observed MW: 90 kDa

Buffer: PBS, pH 7.3, with 0.02% sodium azide and 50% glycerol.

Concentration: 2 mg/ml

Note: This product is for research use only.

For Reference Only