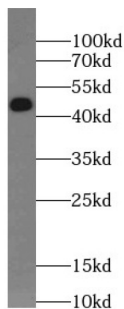


Transforming Growth Factor Beta-1 (TGFB1) Antibody

Catalogue No.: abx239898



WB analysis of A549 cells, using TGFB1 antibody (1/1000 dilution).

Transforming Growth Factor Beta-1 (TGFB1) Antibody is a Rabbit Polyclonal antibody for the detection of TGFB1.

TGFB, also named as LAP and TGFB1, is a multifunctional peptide that controls proliferation, differentiation, and other functions in many cell types. TGFB acts synergistically with TGFA in inducing transformation. It also acts as a negative autocrine growth factor. Dysregulation of TGFB activation and signaling may result in apoptosis. Many cells synthesize TGFB and almost all of them have specific receptors for it. TGFB positively and negatively regulates many other growth factors. It plays an important role in bone remodeling as it is a potent stimulator of osteoblastic bone formation, causing chemotaxis, proliferation and differentiation in committed osteoblasts. It is highly expressed in bone. Mutation of TGFB are the cause of Camurati-Engelmann disease (CED) which known as progressive diaphyseal dysplasia 1 (DPD1).

Target:	Transforming Growth Factor Beta-1 (TGFB1)
Clonality:	Polyclonal
Reactivity:	Human, Mouse, Rat
Tested Applications:	ELISA, WB
Host:	Rabbit
Recommended dilutions:	WB: 1/500 - 1/2000. Optimal dilutions/concentrations should be determined by the end user.
Conjugation:	Unconjugated
Immunogen:	transforming growth factor, beta 1
Isotype:	IgG
Form:	Liquid
Purity:	≥ 95% (SDS-PAGE)
Purification:	Purified by immunogen affinity chromatography.

Datasheet

Version: 2.0.0

Revision date: 22 Dec 2024



Storage: Aliquot and store at -20°C. Avoid repeated freeze/thaw cycles.

Validity: 12 months.

UniProt Primary AC: P01137 ([UniProt](#), [ExPASy](#))

Molecular Weight: Observed MW: 44 kDa

Buffer: PBS, pH 7.3, with 0.02% sodium azide and 50% glycerol.

Concentration: 2 mg/ml

Note: This product is for research use only.

For Reference Only