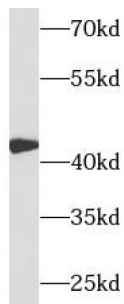


## Complement Factor H Related 3 (CFHR3) Antibody

Catalogue No.: abx239929



WB analysis of A549 cells, using CFHR3 antibody (1/1000 dilution).

Complement Factor H Related 3 (CFHR3) Antibody is a Rabbit Polyclonal antibody for the detection of CFHR3.

The protein encoded by this gene is a secreted protein, which belongs to the complement factor H-related protein family. It binds to heparin, and may be involved in complement regulation. Mutations in this gene are associated with decreased risk of age-related macular degeneration, and with an increased risk of atypical hemolytic-uremic syndrome. Alternatively spliced transcript variants encoding different isoforms have been found for this gene.

<b>Target:</b>	Complement Factor H Related 3 (CFHR3)
<b>Clonality:</b>	Polyclonal
<b>Reactivity:</b>	Human, Mouse, Rat
<b>Tested Applications:</b>	ELISA, WB
<b>Host:</b>	Rabbit
<b>Recommended dilutions:</b>	WB: 1/500 - 1/2000. Optimal dilutions/concentrations should be determined by the end user.
<b>Conjugation:</b>	Unconjugated
<b>Immunogen:</b>	CFHR3
<b>Isotype:</b>	IgG
<b>Form:</b>	Liquid
<b>Purity:</b>	≥ 95% (SDS-PAGE)
<b>Purification:</b>	Purified by immunogen affinity chromatography.
<b>Storage:</b>	Aliquot and store at -20°C. Avoid repeated freeze/thaw cycles.

# Datasheet

Version: 3.0.0  
Revision date: 21 Mar 2025



<b>Validity:</b>	12 months.
<b>UniProt Primary AC:</b>	Q02985 ( <a href="#">UniProt</a> , <a href="#">ExPASy</a> )
<b>Gene Symbol:</b>	CFHR3
<b>GeneID:</b>	<a href="#">10878</a>
<b>KEGG:</b>	hsa:10878
<b>String:</b>	<a href="#">9606.ENSP00000356395</a>
<b>Molecular Weight:</b>	Observed MW: 45 kDa
<b>Buffer:</b>	PBS, pH 7.3, with 0.02% sodium azide and 50% glycerol.
<b>Concentration:</b>	2 mg/ml
<b>Note:</b>	THIS PRODUCT IS FOR RESEARCH USE ONLY. NOT FOR USE IN DIAGNOSTIC, THERAPEUTIC OR COSMETIC PROCEDURES. NOT FOR HUMAN OR ANIMAL CONSUMPTION.

For Reference Only