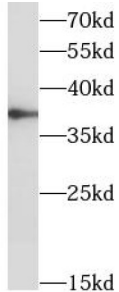
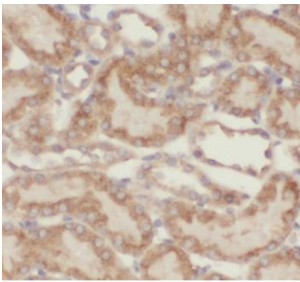


Mitochondrial Import Receptor Subunit TOM40 Homolog (TOMM40) Antibody

Catalogue No.: abx239946



WB analysis of mouse brain tissue, using TOM40 antibody (1/600 dilution).



IHC-P analysis of human kidney tissue, using TOM40 antibody (1/200 dilution).

Mitochondrial Import Receptor Subunit TOM40 Homolog (TOMM40) Antibody is a Rabbit Polyclonal antibody for the detection of Tom40.

Target: Mitochondrial Import Receptor Subunit TOM40 Homolog (TOMM40)

Clonality: Polyclonal

Reactivity: Human, Mouse, Rat

Tested Applications: ELISA, WB, IHC

Host: Rabbit

Recommended dilutions: WB: 1/500 - 1/2000, IHC: 1/50 - 1/200. Optimal dilutions/concentrations should be determined by the end user.

Conjugation: Unconjugated

Immunogen: translocase of outer mitochondrial membrane 40 homolog(yeast)

Isotype: IgG

Form: Liquid

Datasheet

Version: 2.0.0
Revision date: 27 Mar 2025



Purity:	≥ 95% (SDS-PAGE)
Purification:	Purified by immunogen affinity chromatography.
Storage:	Aliquot and store at -20°C. Avoid repeated freeze/thaw cycles.
Validity:	12 months.
UniProt Primary AC:	O96008 (UniProt , ExpASY)
Gene Symbol:	TOMM40
GeneID:	10452
NCBI Accession:	NP_001122389.1
KEGG:	hsa:10452
String:	9606.ENSP00000410339
Molecular Weight:	Observed MW: 38 kDa
Buffer:	PBS, pH 7.3, with 0.02% sodium azide and 50% glycerol.
Concentration:	2 mg/ml
Note:	THIS PRODUCT IS FOR RESEARCH USE ONLY. NOT FOR USE IN DIAGNOSTIC, THERAPEUTIC OR COSMETIC PROCEDURES. NOT FOR HUMAN OR ANIMAL CONSUMPTION.

For Reference Only