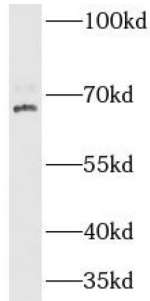
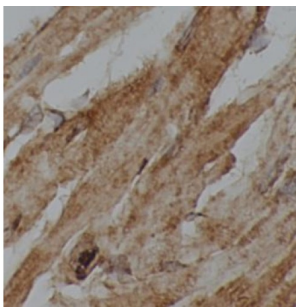


## ATP-dependent Clp protease ATP-binding subunit clpX-like, mitochondrial (CLPX) Antibody

Catalogue No.: abx239960



WB analysis of 293T cells, using CLPX antibody (1/1000 dilution).



IHC-P analysis of mouse heart tissue, using CLPX antibody (1/200 dilution).

ATP-dependent Clp protease ATP-binding subunit clpX-like, mitochondrial (CLPX) Antibody is a Rabbit Polyclonal antibody for the detection of CLPX.

**Target:** ATP-dependent Clp protease ATP-binding subunit clpX-like, mitochondrial (CLPX)

**Clonality:** Polyclonal

**Reactivity:** Human, Mouse, Rat

**Tested Applications:** ELISA, WB, IHC

**Host:** Rabbit

**Recommended dilutions:** WB: 1/500 - 1/2000, IHC: 1/50 - 1/500. Optimal dilutions/concentrations should be determined by the end user.

**Conjugation:** Unconjugated

**Immunogen:** ATP-dependent Clp protease ATP-binding subunit clpX-like, mitochondrial

**Isotype:** IgG

**Form:** Liquid

# Datasheet

Version: 3.0.0  
Revision date: 01 Apr 2025



<b>Purity:</b>	≥ 95% (SDS-PAGE)
<b>Purification:</b>	Purified by immunogen affinity chromatography.
<b>Storage:</b>	Aliquot and store at -20°C. Avoid repeated freeze/thaw cycles.
<b>Validity:</b>	12 months.
<b>UniProt Primary AC:</b>	O76031 ( <a href="#">UniProt</a> , <a href="#">ExPASy</a> )
<b>Gene Symbol:</b>	CLPX
<b>GeneID:</b>	<a href="#">10845</a>
<b>HGNC:</b>	2088
<b>KEGG:</b>	hsa:10845
<b>Molecular Weight:</b>	Observed MW: 69 kDa
<b>Buffer:</b>	PBS, pH 7.3, with 0.02% sodium azide and 50% glycerol.
<b>Concentration:</b>	2 mg/ml
<b>Note:</b>	THIS PRODUCT IS FOR RESEARCH USE ONLY. NOT FOR USE IN DIAGNOSTIC, THERAPEUTIC OR COSMETIC PROCEDURES. NOT FOR HUMAN OR ANIMAL CONSUMPTION.

For Reference Only