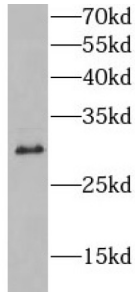


## HLA Class II Histocompatibility Antigen, DQ Beta 1 Chain (HLA-DQB1) Antibody

Catalogue No.: abx239966



WB analysis of NIH/3T3 cells, using HLA-DQB1 antibody (1/1000 dilution).

HLA Class II Histocompatibility Antigen, DQ Beta 1 Chain (HLA-DQB1) Antibody is a Rabbit Polyclonal antibody for the detection of HLA-DQB1.

<b>Target:</b>	HLA Class II Histocompatibility Antigen, DQ Beta 1 Chain (HLA-DQB1)
<b>Clonality:</b>	Polyclonal
<b>Reactivity:</b>	Human, Mouse
<b>Tested Applications:</b>	ELISA, WB
<b>Host:</b>	Rabbit
<b>Recommended dilutions:</b>	WB: 1/500 - 1/2000. Optimal dilutions/concentrations should be determined by the end user.
<b>Conjugation:</b>	Unconjugated
<b>Immunogen:</b>	major histocompatibility complex, class II, DQ beta 1
<b>Isotype:</b>	IgG
<b>Form:</b>	Liquid
<b>Purity:</b>	≥ 95% (SDS-PAGE)
<b>Purification:</b>	Purified by immunogen affinity chromatography.
<b>Storage:</b>	Aliquot and store at -20°C. Avoid repeated freeze/thaw cycles.
<b>Validity:</b>	12 months.

# Datasheet

Version: 3.0.0  
Revision date: 30 Mar 2025



**UniProt Primary AC:** P01920 ([UniProt](#), [ExPASy](#))

**Gene Symbol:** HLA-DQB1

**GeneID:** [3119](#)

**OMIM:** [604305](#)

**KEGG:** hsa:3119

**String:** [9606.ENSP00000364080](#)

**Molecular Weight:** Observed MW: 30 kDa

**Buffer:** PBS, pH 7.3, with 0.02% sodium azide and 50% glycerol.

**Concentration:** 2 mg/ml

**Note:** THIS PRODUCT IS FOR RESEARCH USE ONLY. NOT FOR USE IN DIAGNOSTIC, THERAPEUTIC OR COSMETIC PROCEDURES. NOT FOR HUMAN OR ANIMAL CONSUMPTION.

For Reference Only