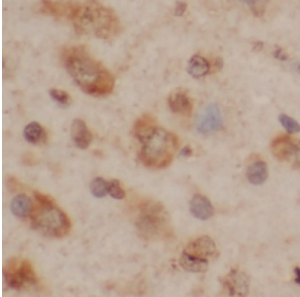


## Pituitary Adenylate Cyclase-Activating Polypeptide / PACAP (ADCYAP1) Antibody

Catalogue No.: abx239994



IHC-P analysis of rat brain tissue, using PACA antibody (1/200 dilution).

Pituitary Adenylate Cyclase-Activating Polypeptide / PACAP (ADCYAP1) Antibody is a Rabbit Polyclonal antibody for the detection of PACAP/ADCYAP1.

<b>Target:</b>	Pituitary Adenylate Cyclase-Activating Polypeptide / PACAP (ADCYAP1)
<b>Clonality:</b>	Polyclonal
<b>Reactivity:</b>	Human, Rat
<b>Tested Applications:</b>	ELISA, IHC
<b>Host:</b>	Rabbit
<b>Recommended dilutions:</b>	IHC: 1/20 - 1/200. Optimal dilutions/concentrations should be determined by the end user.
<b>Conjugation:</b>	Unconjugated
<b>Immunogen:</b>	Pituitary adenylate cyclase-activating polypeptide
<b>Isotype:</b>	IgG
<b>Form:</b>	Liquid
<b>Purity:</b>	≥ 95% (SDS-PAGE)
<b>Purification:</b>	Purified by immunogen affinity chromatography.
<b>Storage:</b>	Aliquot and store at -20°C. Avoid repeated freeze/thaw cycles.
<b>Validity:</b>	12 months.

# Datasheet

Version: 1.0.0  
Revision date: 30 Mar 2025



**UniProt Primary AC:** P18509 ([UniProt](#), [ExPASy](#))

**Gene Symbol:** ADCYAP1

**GeneID:** [116](#)

**OMIM:** [102980](#)

**HGNC:** 241

**KEGG:** hsa:116

**Ensembl:** ENSG00000141433

**String:** [9606.ENSP00000462647](#)

**Buffer:** PBS, pH 7.3, with 0.02% sodium azide and 50% glycerol.

**Concentration:** 2 mg/ml

**Note:** THIS PRODUCT IS FOR RESEARCH USE ONLY. NOT FOR USE IN DIAGNOSTIC, THERAPEUTIC OR COSMETIC PROCEDURES. NOT FOR HUMAN OR ANIMAL CONSUMPTION.

For Reference Only