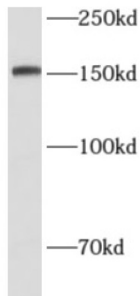
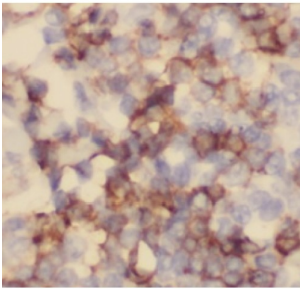


Semaphorin 4D (SEMA4D) Antibody

Catalogue No.: abx240005



WB analysis of HeLa cells, using CD100 antibody (1/1000 dilution).



IHC-P analysis of human tonsillitis tissue, using CD100 antibody (1/200 dilution).

Semaphorin 4D (SEMA4D) Antibody is a Mouse Monoclonal antibody for the detection of CD100.

Target:	Semaphorin 4D (SEMA4D)
Clonality:	Monoclonal
Reactivity:	Human
Tested Applications:	ELISA, WB, IHC
Host:	Mouse
Recommended dilutions:	WB: 1/500 - 1/2000, IHC: 1/50 - 1/200. Optimal dilutions/concentrations should be determined by the end user.
Conjugation:	Unconjugated
Immunogen:	sema domain, immunoglobulin domain(Ig), transmembrane domain(TM) and short cytoplasmic domain,(semaphorin) 4D
Isotype:	IgG ₁
Form:	Liquid
Purity:	≥ 95% (SDS-PAGE)

Datasheet

Version: 1.0.0
Revision date: 12 Mar 2025



Purification:	Purified by Protein A and Protein G affinity chromatography.
Storage:	Aliquot and store at -20°C. Avoid repeated freeze/thaw cycles.
Validity:	12 months.
UniProt Primary AC:	Q92854 (UniProt , ExPASy)
Gene Symbol:	SEMA4D
GeneID:	10507
Molecular Weight:	Observed MW: 150 kDa
Buffer:	PBS, pH 7.3, with 0.02% sodium azide and 50% glycerol.
Concentration:	2 mg/ml
Note:	THIS PRODUCT IS FOR RESEARCH USE ONLY. NOT FOR USE IN DIAGNOSTIC, THERAPEUTIC OR COSMETIC PROCEDURES. NOT FOR HUMAN OR ANIMAL CONSUMPTION.

For Reference Only