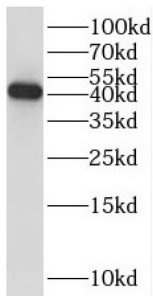
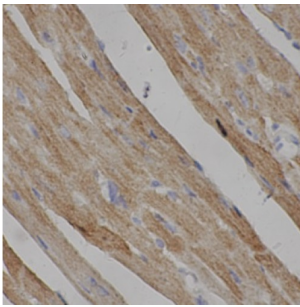


## Translocation Associated Membrane Protein 1 (TRAM1) Antibody

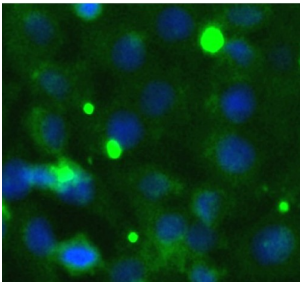
Catalogue No.: abx240062



WB analysis of HeLa cells, using TRAM1 antibody (1/1000 dilution).



IHC-P analysis of mouse heart tissue, using tram1 antibody (1/200 dilution).



IF analysis of HeLa cells, using TRAM1 antibody (1/50 dilution).

Translocation Associated Membrane Protein 1 (TRAM1) Antibody is a Rabbit Polyclonal antibody for the detection of tram1.

**Target:** Translocation Associated Membrane Protein 1 (TRAM1)

**Clonality:** Polyclonal

**Reactivity:** Human, Mouse

**Tested Applications:** ELISA, WB, IHC, IF/ICC

**Host:** Rabbit

**Recommended dilutions:** WB: 1/200 - 1/2000, IHC: 1/50 - 1/200, IF/ICC: 1/50 - 1/200. Optimal dilutions/concentrations should be determined by the end user.

**Conjugation:** Unconjugated

# Datasheet

Version: 1.0.0  
Revision date: 10 Apr 2025



<b>Immunogen:</b>	Translocating chain-associated membrane protein 1
<b>Isotype:</b>	IgG
<b>Form:</b>	Liquid
<b>Purity:</b>	≥ 95% (SDS-PAGE)
<b>Purification:</b>	Purified by immunogen affinity chromatography.
<b>Storage:</b>	Aliquot and store at -20°C. Avoid repeated freeze/thaw cycles.
<b>Validity:</b>	12 months.
<b>UniProt Primary AC:</b>	Q15629 ( <a href="#">UniProt</a> , <a href="#">ExpASY</a> )
<b>Gene Symbol:</b>	TRAM1
<b>GeneID:</b>	<a href="#">23471</a>
<b>OMIM:</b>	<a href="#">605190</a>
<b>NCBI Accession:</b>	NP_001304733.1, NM_001317804.1, NP_001304734.1, NM_001317805.1, NP_055109.1, NM_014294.5
<b>KEGG:</b>	hsa:23471
<b>String:</b>	<a href="#">9606.ENSP00000262213</a>
<b>Molecular Weight:</b>	Observed MW: 43 kDa
<b>Buffer:</b>	PBS, pH 7.3, with 0.02% sodium azide and 50% glycerol.
<b>Concentration:</b>	2 mg/ml
<b>Note:</b>	THIS PRODUCT IS FOR RESEARCH USE ONLY. NOT FOR USE IN DIAGNOSTIC, THERAPEUTIC OR COSMETIC PROCEDURES. NOT FOR HUMAN OR ANIMAL CONSUMPTION.