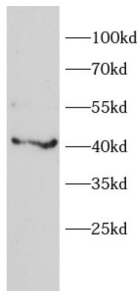
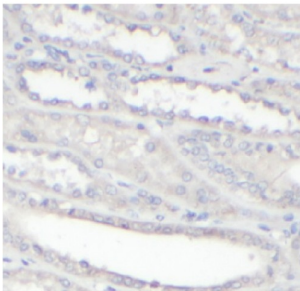


Alpha-1-B Glycoprotein (A1BG) Antibody

Catalogue No.: abx240092



WB analysis of Mouse kidney tissue, using A1BG antibody (1/1000 dilution).



IHC-P analysis of human kidney tissue, using A1BG antibody (1/50 dilution).

Alpha-1-B Glycoprotein (A1BG) Antibody is a Rabbit Polyclonal antibody for the detection of A1BG.

Target: Alpha-1-B Glycoprotein (A1BG)**Clonality:** Polyclonal**Reactivity:** Human, Mouse**Tested Applications:** ELISA, WB, IHC**Host:** Rabbit**Recommended dilutions:** WB: 1/500 - 1/2000, IHC: 1/50 - 1/200. Optimal dilutions/concentrations should be determined by the end user.**Conjugation:** Unconjugated**Immunogen:** alpha-1-B glycoprotein**Isotype:** IgG**Form:** Liquid**Purity:** ≥ 95% (SDS-PAGE)

Datasheet

Version: 2.0.0
Revision date: 12 Mar 2025



Purification:	Purified by immunogen affinity chromatography.
Storage:	Aliquot and store at -20°C. Avoid repeated freeze/thaw cycles.
Validity:	12 months.
UniProt Primary AC:	P04217 (UniProt , ExPASy)
Gene Symbol:	A1BG
GeneID:	1
OMIM:	138670
HGNC:	5
KEGG:	hsa:1
Ensembl:	ENSG00000121410
String:	9606.ENSP00000263100
Molecular Weight:	Observed MW: 40, 70 kDa
Buffer:	PBS, pH 7.3, with 0.02% sodium azide and 50% glycerol.
Concentration:	2 mg/ml
Note:	THIS PRODUCT IS FOR RESEARCH USE ONLY. NOT FOR USE IN DIAGNOSTIC, THERAPEUTIC OR COSMETIC PROCEDURES. NOT FOR HUMAN OR ANIMAL CONSUMPTION.

For Reference Only