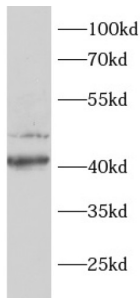
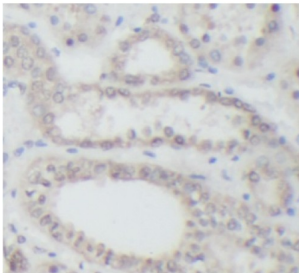


Proline-Rich AKT1 Substrate 1 (AKT1S1) Antibody

Catalogue No.: abx240095



WB analysis of MCF7 cells, using AKT1S1 antibody (1/1000 dilution).



IHC-P analysis of human kidney tissue, using AKT1S1 antibody (1/100 dilution).

Proline-Rich AKT1 Substrate 1 (AKT1S1) Antibody is a Rabbit Polyclonal antibody for the detection of AKT1S1.

Target:	Proline-Rich AKT1 Substrate 1 (AKT1S1)
Clonality:	Polyclonal
Reactivity:	Human
Tested Applications:	ELISA, WB, IHC
Host:	Rabbit
Recommended dilutions:	WB: 1/500 - 1/2000, IHC: 1/20 - 1/200. Optimal dilutions/concentrations should be determined by the end user.
Conjugation:	Unconjugated
Immunogen:	Proline-rich AKT1 substrate 1
Isotype:	IgG
Form:	Liquid
Purity:	≥ 95% (SDS-PAGE)

Datasheet

Version: 1.0.0
Revision date: 23 Feb 2025



Purification:	Purified by immunogen affinity chromatography.
Storage:	Aliquot and store at -20°C. Avoid repeated freeze/thaw cycles.
Validity:	12 months.
UniProt Primary AC:	Q96B36 (UniProt , ExPASy)
Gene Symbol:	AKT1S1
GeneID:	84335
OMIM:	610221
HGNC:	28426
KEGG:	hsa:84335
Ensembl:	ENSG00000204673
String:	9606.ENSP00000375711
Molecular Weight:	Observed MW: 40-50 kDa
Buffer:	PBS, pH 7.3, with 0.02% sodium azide and 50% glycerol.
Concentration:	2 mg/ml
Note:	This product is for research use only.

For Reference Only