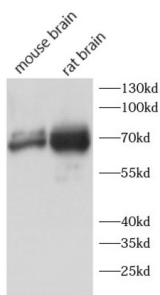
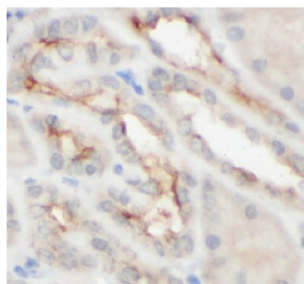


Caprin-2 (Caprin2) Antibody

Catalogue No.: abx240113



WB analysis of various lysates, using CAPRIN2 antibody (1/600 dilution).



IHC-P analysis of human kidney tissue, using CAPRIN2 antibody (1/100 dilution).

Caprin-2 (Caprin2) Antibody is a Rabbit Polyclonal antibody for the detection of CAPRIN2.

May regulate the transport and translation of mRNAs, modulating for instance the expression of proteins involved in synaptic plasticity in neurons. Involved in regulation of growth as erythroblasts shift from a highly proliferative state towards their terminal phase of differentiation. May be involved in apoptosis.

Target: Caprin-2 (Caprin2)

Clonality: Polyclonal

Reactivity: Human, Mouse, Rat

Tested Applications: ELISA, WB, IHC

Host: Rabbit

Recommended dilutions: WB: 1/500 - 1/2000, IHC: 1/20 - 1/500, IF/ICC: 1/10 - 1/100. Optimal dilutions/concentrations should be determined by the end user.

Conjugation: Unconjugated

Immunogen: caprin family member 2

Isotype: IgG

Datasheet

Version: 2.0.0
Revision date: 28 Apr 2025



Form:	Liquid
Purity:	≥ 95% (SDS-PAGE)
Purification:	Purified by immunogen affinity chromatography.
Storage:	Aliquot and store at -20°C. Avoid repeated freeze/thaw cycles.
Validity:	12 months.
UniProt Primary AC:	Q6IMN6 (UniProt , ExPASy)
Gene Symbol:	CAPRN2
GeneID:	65981
KEGG:	hsa:65981
String:	9606.ENSP00000298892
Molecular Weight:	Observed MW: 70 kDa
Buffer:	PBS, pH 7.3, with 0.02% sodium azide and 50% glycerol.
Concentration:	2 mg/ml
Note:	THIS PRODUCT IS FOR RESEARCH USE ONLY. NOT FOR USE IN DIAGNOSTIC, THERAPEUTIC OR COSMETIC PROCEDURES. NOT FOR HUMAN OR ANIMAL CONSUMPTION.

For Reference Only