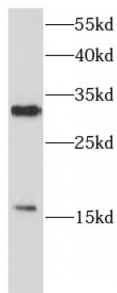


Microfibrillar Associated Protein 2 (MFAP2) Antibody

Catalogue No.: abx240119



WB analysis of HeLa cells, using MFAP2 antibody (1/1000 dilution).

Microfibrillar Associated Protein 2 (MFAP2) Antibody is a Rabbit Polyclonal antibody for the detection of MFAP2.

Microfibrillar-associated protein 2 is a major antigen of elastin-associated microfibrils and a candidate for involvement in the etiology of inherited connective tissue diseases. Four transcript variants encoding two different isoforms have been found for this gene.

Target:	Microfibrillar Associated Protein 2 (MFAP2)
Clonality:	Polyclonal
Reactivity:	Human, Mouse, Rat
Tested Applications:	ELISA, WB
Host:	Rabbit
Recommended dilutions:	WB: 1/500 - 1/2000. Optimal dilutions/concentrations should be determined by the end user.
Conjugation:	Unconjugated
Immunogen:	Microfibrillar-associated protein 2
Isotype:	IgG
Form:	Liquid
Purity:	≥ 95% (SDS-PAGE)
Purification:	Purified by immunogen affinity chromatography.
Storage:	Aliquot and store at -20°C. Avoid repeated freeze/thaw cycles.

Datasheet

Version: 1.0.0
Revision date: 30 Jul 2023



Validity:	12 months.
UniProt Primary AC:	P55001 (UniProt , ExPASy)
Gene Symbol:	MFAP2
GeneID:	4237
KEGG:	hsa:4237
String:	9606.ENSP00000364685
Molecular Weight:	Observed MW: 17 kDa, 31 kDa
Buffer:	PBS, pH 7.3, with 0.02% sodium azide and 50% glycerol.
Concentration:	2 mg/ml
Note:	This product is for research use only.

For Reference Only