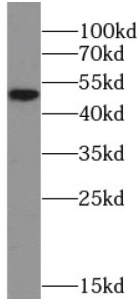
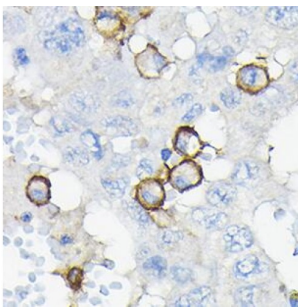


## Leukocyte Immunoglobulin Like Receptor Subfamily B Member 4 (LILRB4) Antibody

Catalogue No.: abx240161



WB analysis of A549 cells, using LILRB4 antibody (1/1000 dilution).



IHC-P analysis of human liver cancer tissue, using LILRB4 antibody (1/50 dilution).

Leukocyte Immunoglobulin Like Receptor Subfamily B Member 4 (LILRB4) Antibody is a Rabbit Polyclonal antibody for the detection of LILRB4.

This gene is a member of the leukocyte immunoglobulin-like receptor (LIR) family, which is found in a gene cluster at chromosomal region 19q13.4. The encoded protein belongs to the subfamily B class of LIR receptors which contain two or four extracellular immunoglobulin domains, a transmembrane domain, and two to four cytoplasmic immunoreceptor tyrosine-based inhibitory motifs (ITIMs). The receptor is expressed on immune cells where it binds to MHC class I molecules on antigen-presenting cells and transduces a negative signal that inhibits stimulation of an immune response. The receptor can also function in antigen capture and presentation. It is thought to control inflammatory responses and cytotoxicity to help focus the immune response and limit autoreactivity. Multiple transcript variants encoding different isoforms have been found for this gene.

**Target:** Leukocyte Immunoglobulin Like Receptor Subfamily B Member 4 (LILRB4)

**Clonality:** Polyclonal

**Reactivity:** Human, Mouse, Rat

**Tested Applications:** ELISA, WB, IHC, IF/ICC

**Host:** Rabbit

**Recommended dilutions:** WB: 1/500 - 1/2000, IHC: 1/50 - 1/200, IF/ICC: 1/50 - 1/200. Optimal dilutions/concentrations should be determined by the end user.

# Datasheet

Version: 3.0.0  
Revision date: 12 Mar 2025



<b>Conjugation:</b>	Unconjugated
<b>Immunogen:</b>	Leukocyte immunoglobulin-like receptor subfamily B member 4
<b>Isotype:</b>	IgG
<b>Form:</b>	Liquid
<b>Purity:</b>	≥ 95% (SDS-PAGE)
<b>Purification:</b>	Purified by immunogen affinity chromatography.
<b>Storage:</b>	Aliquot and store at -20°C. Avoid repeated freeze/thaw cycles.
<b>Validity:</b>	12 months.
<b>UniProt Primary AC:</b>	Q8NHJ6 ( <a href="#">UniProt</a> , <a href="#">ExPASy</a> )
<b>KEGG:</b>	hsa:11006
<b>String:</b>	<a href="#">9606.ENSP00000375616</a>
<b>Molecular Weight:</b>	Observed MW: 49 kDa
<b>Buffer:</b>	PBS, pH 7.3, with 0.02% sodium azide and 50% glycerol.
<b>Concentration:</b>	2 mg/ml
<b>Note:</b>	THIS PRODUCT IS FOR RESEARCH USE ONLY. NOT FOR USE IN DIAGNOSTIC, THERAPEUTIC OR COSMETIC PROCEDURES. NOT FOR HUMAN OR ANIMAL CONSUMPTION.