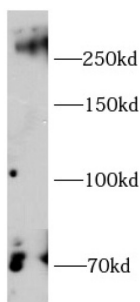
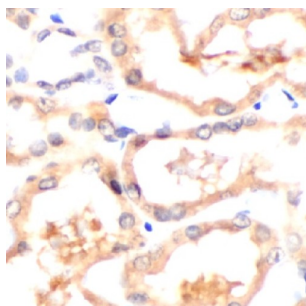


Chondroitin Sulfate Proteoglycan 4 (CSPG4) Antibody

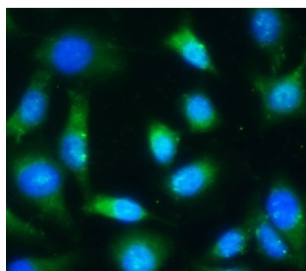
Catalogue No.: abx240163



WB analysis of HeLa cells, using CSPG4 antibody (1/1000 dilution).



IHC-P analysis of human kidney tissue, using CSPG4 antibody (1/100 dilution).



IF analysis of HeLa cells, using CSPG4 antibody (1/50 dilution).

Chondroitin Sulfate Proteoglycan 4 (CSPG4) Antibody is a Rabbit Polyclonal antibody for the detection of CSPG4.

CSPG4, also named as HMW-MAA, MCSP, MCSPG, MEL-CSPG, MSK16 and NG2, is a proteoglycan playing a role in cell proliferation and migration which stimulates endothelial cells motility during microvascular morphogenesis. CSPG4 may inhibit neurite outgrowth and growth cone collapse during axon regeneration. It is cell surface receptor for collagen alpha 2 (VI) which may confer cells ability to migrate on that substrate. CSPG4 may regulate MPP16-dependent degradation and invasion of type I collagen participating in melanoma cells invasion properties. It modulates the plasminogen system by enhancing plasminogen activation and inhibiting angiostatin.

Target: Chondroitin Sulfate Proteoglycan 4 (CSPG4)

Clonality: Polyclonal

Reactivity: Human, Mouse, Rat

Tested Applications: ELISA, WB, IHC, IF/ICC

Datasheet

Version: 3.0.0
Revision date: 27 Apr 2025



Host:	Rabbit
Recommended dilutions:	WB: 1/500 - 1/2000, IHC: 1/50 - 1/200, IF/ICC: 1/50 - 1/500. Optimal dilutions/concentrations should be determined by the end user.
Conjugation:	Unconjugated
Immunogen:	chondroitin sulfate proteoglycan 4
Isotype:	IgG
Form:	Liquid
Purity:	≥ 95% (SDS-PAGE)
Purification:	Purified by immunogen affinity chromatography.
Storage:	Aliquot and store at -20°C. Avoid repeated freeze/thaw cycles.
Validity:	12 months.
UniProt Primary AC:	Q6UVK1 (UniProt , ExPASy)
Gene Symbol:	CSPG4
GeneID:	1464
OMIM:	601172
HGNC:	2466
KEGG:	hsa:1464
Ensembl:	ENSG00000173546
String:	9606.ENSP00000312506
Molecular Weight:	Observed MW: 270 kDa
Buffer:	PBS, pH 7.3, with 0.02% sodium azide and 50% glycerol.
Concentration:	2 mg/ml
Note:	THIS PRODUCT IS FOR RESEARCH USE ONLY. NOT FOR USE IN DIAGNOSTIC, THERAPEUTIC OR COSMETIC PROCEDURES. NOT FOR HUMAN OR ANIMAL CONSUMPTION.