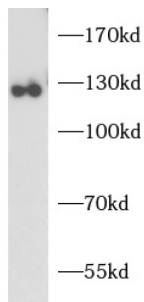


B-Cell Receptor CD22 / SIGLEC2 (CD22) Antibody

Catalogue No.: abx240223



WB analysis of mouse spleen tissue, using CD22 antibody (1/1000 dilution).

B-Cell Receptor CD22 / SIGLEC2 (CD22) Antibody is a Rabbit Polyclonal antibody for the detection of CD22.

Target:	B-Cell Receptor CD22 / SIGLEC2 (CD22)
Clonality:	Polyclonal
Reactivity:	Human, Mouse
Tested Applications:	ELISA, WB
Host:	Rabbit
Recommended dilutions:	WB: 1/500 - 1/2000. Optimal dilutions/concentrations should be determined by the end user.
Conjugation:	Unconjugated
Immunogen:	CD22 molecule
Isotype:	IgG
Form:	Liquid
Purity:	≥ 95% (SDS-PAGE)
Purification:	Purified by immunogen affinity chromatography.
Storage:	Aliquot and store at -20°C. Avoid repeated freeze/thaw cycles.
Validity:	12 months.
UniProt Primary AC:	P20273 (UniProt , ExpASY)

Datasheet

Version: 1.0.0
Revision date: 12 Mar 2025



Gene Symbol:	CD22
GeneID:	933
OMIM:	107266
HGNC:	1643
Ensembl:	ENSG00000012124
Molecular Weight:	Observed MW: 120 kDa
Buffer:	PBS, pH 7.3, with 0.02% sodium azide and 50% glycerol.
Concentration:	2 mg/ml
Note:	THIS PRODUCT IS FOR RESEARCH USE ONLY. NOT FOR USE IN DIAGNOSTIC, THERAPEUTIC OR COSMETIC PROCEDURES. NOT FOR HUMAN OR ANIMAL CONSUMPTION.

For Reference Only