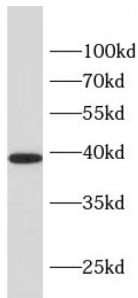
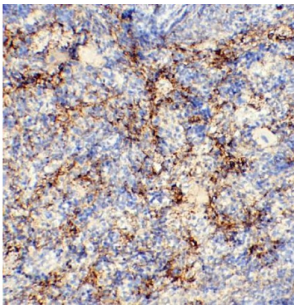


## Glycophorin A (GYPA) Antibody

Catalogue No.: abx240278



WB analysis of human blood, using GYPA antibody (1/1000 dilution).



IHC-P analysis of human spleen tissue, using GYPA antibody (1/1000 dilution).

Glycophorin A (GYPA) Antibody is a Mouse Monoclonal antibody for the detection of GYPA.

<b>Target:</b>	Glycophorin A (GYPA)
<b>Clonality:</b>	Monoclonal
<b>Reactivity:</b>	Human
<b>Tested Applications:</b>	ELISA, WB, IHC
<b>Host:</b>	Mouse
<b>Recommended dilutions:</b>	WB: 1/500 - 1/2000, IHC: 1/500 - 1/2000. Optimal dilutions/concentrations should be determined by the end user.
<b>Conjugation:</b>	Unconjugated
<b>Immunogen:</b>	glycophorin A(MNS blood group)
<b>Isotype:</b>	IgG <sub>1</sub>
<b>Form:</b>	Liquid
<b>Purity:</b>	≥ 95% (SDS-PAGE)

# Datasheet

Version: 1.0.0  
Revision date: 13 Sep 2023



<b>Purification:</b>	Purified by Protein A and Protein G affinity chromatography.
<b>Storage:</b>	Aliquot and store at -20°C. Avoid repeated freeze/thaw cycles.
<b>Validity:</b>	12 months.
<b>UniProt Primary AC:</b>	P02724 ( <a href="#">UniProt</a> , <a href="#">ExpASY</a> )
<b>GeneID:</b>	<a href="#">2993</a>
<b>OMIM:</b>	<a href="#">111300</a>
<b>KEGG:</b>	hsa:2993
<b>String:</b>	<a href="#">9606.ENSP00000354003</a>
<b>Molecular Weight:</b>	Observed MW: 40 kDa
<b>Buffer:</b>	PBS, pH 7.3, with 0.02% sodium azide and 50% glycerol.
<b>Concentration:</b>	2 mg/ml
<b>Note:</b>	This product is for research use only.

For Reference Only