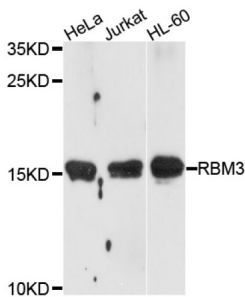


Putative RNA-Binding Protein 3 (RBM3) Antibody

Catalogue No.: abx004547



Western blot analysis of extracts of various cell lines, using RBM3 antibody (abx004547) at 1/1000 dilution.

RBM3 Antibody is a Rabbit Polyclonal antibody against RBM3. This gene is a member of the glycine-rich RNA-binding protein family and encodes a protein with one RNA recognition motif (RRM) domain. Expression of this gene is induced by cold shock and low oxygen tension. A pseudogene exists on chromosome 1. Multiple alternatively spliced transcript variants that are predicted to encode different isoforms have been characterized although some of these variants fit nonsense-mediated decay (NMD) criteria.

Target:	Putative RNA-Binding Protein 3 (RBM3)
Clonality:	Polyclonal
Reactivity:	Human, Mouse, Rat
Tested Applications:	WB, IHC
Host:	Rabbit
Recommended dilutions:	WB: 1/200 - 1/2000, IHC-P: 1/50 - 1/200. Not tested in IHC-F. Optimal dilutions/concentrations should be determined by the end user.
Conjugation:	Unconjugated
Immunogen:	Recombinant fusion protein containing a sequence corresponding to amino acids 1-157 of human RBM3.
Isotype:	IgG
Form:	Liquid
Purification:	Purified by affinity chromatography.
Storage:	Aliquot and store at -20°C. Avoid repeated freeze/thaw cycles.
UniProt Primary AC:	P98179 (UniProt , ExPASy)

Datasheet

Version: 2.0.0
Revision date: 15 Nov 2024



Gene Symbol: RBM3

GeneID: [5935](#)

NCBI Accession: NP_006734.1

KEGG: hsa:5935

String: [9606.ENSP00000365950](#)

Molecular Weight: Calculated MW: 17 kDa
Observed MW: 17 kDa

Buffer: PBS, pH 7.3, containing 0.02% sodium azide, 50% glycerol.

Concentration: > 0.2 mg/ml

Note: This product is for research use only.

For Reference Only