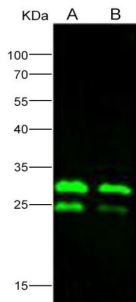


## Ebola Virus Membrane-Associated Protein VP24 (EBOV VP24) Antibody

Catalogue No.: abx201318



Western blot analysis of recombinant EBOV (subtype Zaire, strain H.sapiens-wt/GIN/2014/Kissidougou-C15) VP24 Protein (20 ng and 10 ng), using EBOV VP24 Antibody (1/2000 dilution).

Ebola Virus Membrane-Associated Protein VP24 (EBOV VP24) Antibody (Subtype Zaire, Strain H. sapiens-WT/GIN/2014/Kissidougou-C15) is a Rabbit Polyclonal antibody for the detection of Ebola Virus Membrane-Associated Protein VP24 (EBOV VP24).

|                               |   |
|-------------------------------|---|
| <b>Target:</b>                | Ebola Virus Membrane-Associated Protein VP24 (EBOV VP24)                                    |
| <b>Clonality:</b>             | Polyclonal  |
| <b>Reactivity:</b>            | Virus   |
| <b>Tested Applications:</b>   | WB  |
| <b>Host:</b>                  | Rabbit  |
| <b>Recommended dilutions:</b> | WB: 1/1000 - 1/5000. Optimal dilutions/concentrations should be determined by the end user. |
| <b>Conjugation:</b>           | Unconjugated  |
| <b>Immunogen:</b>             | Recombinant EBOV (subtype Zaire, strain H.sapiens-wt/GIN/2014/Kissidougou-C15) VP24 Protein |
| <b>Isotype:</b>               | IgG   |
| <b>Form:</b>                  | Liquid  |
| <b>Purification:</b>          | Purified by antigen affinity chromatography. 0.2 µm filtered.                               |
| <b>Storage:</b>               | Aliquot and store at -20 °C. Avoid repeated freeze/thaw cycles.                             |
| <b>Buffer:</b>                | PBS.  |
| <b>Concentration:</b>         | 1 mg/ml   |

# Datasheet

Version: 2.0.0

Revision date: 26 Mar 2025



**Note:** THIS PRODUCT IS FOR RESEARCH USE ONLY. NOT FOR USE IN DIAGNOSTIC, THERAPEUTIC OR COSMETIC PROCEDURES. NOT FOR HUMAN OR ANIMAL CONSUMPTION.

**Directions for use:** Centrifuge before opening to ensure complete recovery of vial contents.

For Reference Only