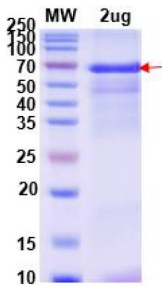
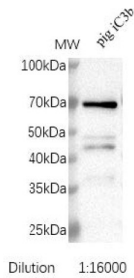


## Inactivated Complement Factor 3b (iC3b) Antibody

Catalogue No.: abx376573



SDS-PAGE analysis of recombinant Pig Inactivated Complement Factor 3b Protein expressed in E. coli.



Western blot analysis of recombinant Pig Inactivated Complement Factor 3b Protein using recombinant Pig Inactivated Complement Factor 3b Antibody (1/16000 dilution).

Pig Inactivated Complement Factor 3b (iC3b) Antibody is a Rabbit Polyclonal against Inactivated Complement Factor 3b (iC3b).

<b>Target:</b>	Inactivated Complement Factor 3b (iC3b)
<b>Clonality:</b>	Polyclonal
<b>Reactivity:</b>	Pig
<b>Expression:</b>	Recombinant
<b>Tested Applications:</b>	ELISA, WB, SDS-PAGE
<b>Host:</b>	Rabbit
<b>Recommended dilutions:</b>	WB, Recombinant protein: 0.2-0.8 µg per lane, 1/64000-1/256000. WB, Endogenous lysate: 10-30 µg per lane, 1/1000-1/4000. Optimal dilutions/concentrations should be determined by the end user.
<b>Conjugation:</b>	Unconjugated
<b>Immunogen:</b>	Recombinant protein corresponding to 747-1302 AA derived from Pig iC3b expressed in E.coli.
<b>Isotype:</b>	IgG

# Datasheet

Version: 2.0.0  
Revision date: 25 Nov 2024



<b>Form:</b>	Liquid
<b>Purification:</b>	Purified by affinity chromatography using epitope-specific immunogen.
<b>Storage:</b>	Store at 4 °C for short-term storage. For long-term storage, aliquot and store at -20°C, with up to 50% glycerol. Store at a concentration between 0.5-2 mg/ml. Avoid repeated freeze/thaw cycles.
<b>UniProt Primary AC:</b>	P01025 ( <a href="#">UniProt</a> , <a href="#">ExPASy</a> )
<b>Molecular Weight:</b>	Calculated MW: 65.2 kDa
<b>Sequence:</b>	MGSSHHHHHH SSGLEVLFGQ PGSSDLDEEI IPEEDIISRS QFPESWLWTI EEFKEPKNG ISTKTMNVF L KDSITTWEIL AVLSDDKGI CVADPYEVVV KQDFIDLRL PYSVVRNEQV EIRAILNYR EAEDLKV RVE LLYNPAFCSL ATAKKRHQQT LTVPAKSSVP VPYIIVPLKT GLQEVEVKAA VYNHFISDGV KKTLLK VVPEG MRVNKTVVTR TLDPEHKGQQ GVQREEIPPA DLSDQVPDTE SETKILLQGT PVAQMVEDAI DGD RLKHLIQ TPSGCGEQNM IGMTPTVIAV HYLDSTEQWE KFGLEKRQEA LELIKKGYTQ QLAFRQKNSA F AAFQDRLSS TLLTAYVVKV FAMAANLIAI DSQVLCGAVK WLILEKQKPD GVFEENGPVI HQEMIGGFKN TEEKDVSLTA FVLIALQEAQ DICEPQVNSL LRSINKARDF LADYYLELKR PYTVAIAGYA LALSDKLD EP FLNKLLSTAK ERNRWEEPGQ KLNVEATSY ALLALLVVKD FDSVPIVIRW LNEQRYGGG YGSTQA TFMV FQALAQYQKD VPDHKDLNLD VSIHLPSRS
<b>Buffer:</b>	PBS, pH 7.4
<b>Specificity:</b>	Recognises Pig iC3b Protein in Indirect ELISA and Western blot.
<b>Concentration:</b>	Antibody: 3.53 mg/ml Protein: 1.4 mg/ml
<b>Note:</b>	This product is for research use only. This product is shipped with ice packs. Not for human consumption, cosmetic, therapeutic or diagnostic use.