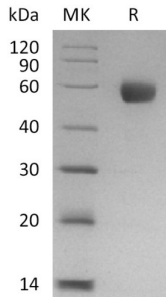


# Classical Swine Fever Virus Envelope Glycoprotein E2 (CSFV-E2) Protein

Catalogue No.: abx694332



SDS-PAGE analysis of recombinant Classical Swine Fever Virus Envelope Glycoprotein E2.

Classical Swine Fever Virus Envelope Glycoprotein E2 (CSFV-E2) Protein is a recombinant protein from CSFV produced in HEK293 cells.

|                             |   |
|-----------------------------|---|
| <b>Target:</b>              | Classical Swine Fever Virus Envelope Glycoprotein E2 (CSFV-E2) Protein            |
| <b>Origin:</b>              | Virus   |
| <b>Expression:</b>          | Recombinant   |
| <b>Tested Applications:</b> | SDS-PAGE  |
| <b>Host:</b>                | HEK293 cells  |
| <b>Form:</b>                | Liquid  |
| <b>Purity:</b>              | > 95% (SDS-PAGE)  |
| <b>Storage:</b>             | Aliquot and store at -20°C for up to 6 months. Avoid repeated freeze/thaw cycles. |
| <b>Validity:</b>            | The validity for this protein is 1 year.  |
| <b>NCBI Accession:</b>      | MZ332510.1  |
| <b>Molecular Weight:</b>    | Calculated MW: 39 kDa<br>Observed MW: 48 kDa - 67 kDa                             |
| <b>Sequence Fragment:</b>   | Arg690-Glu1030  |
| <b>Tag:</b>                 | N-terminal His tag  |
| <b>Buffer:</b>              | PBS, pH7.4, containing 300mM NaCl, 20% Glycerol, 0.02% Tween 80, 0.2 µm filtered. |

# Datasheet

Version: 1.0.0

Revision date: 03 Jun 2024



**Note:**

This product is for research use only.

Not for human consumption, cosmetic, therapeutic or diagnostic use.

For Reference Only