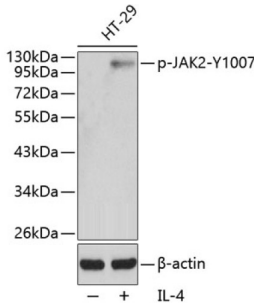


# Tyrosine-Protein Kinase JAK2 Phospho-Tyr1007 (JAK2 pY1007) Antibody

Catalogue No.: abx000421



Western blot analysis of lysates from HT29 cells using Phospho-JAK2-Y1007 Antibody. Secondary antibody: HRP-conjugated Goat anti-Rabbit IgG (H+L) at 1/10000 dilution. Lysates/proteins: 25 µg per lane. Blocking buffer: 3% BSA.

Tyrosine-Protein Kinase JAK2 Phospho-Tyr1007 (JAK2 pY1007) Antibody is a Rabbit Polyclonal antibody against Tyrosine-Protein Kinase JAK2 Phospho-Tyr1007 (JAK2 pY1007). This gene product is a protein tyrosine kinase involved in a specific subset of cytokine receptor signaling pathways. It has been found to be constitutively associated with the prolactin receptor and is required for responses to gamma interferon. Mice that do not express an active protein for this gene exhibit embryonic lethality associated with the absence of definitive erythropoiesis.

<b>Target:</b>	Tyrosine-Protein Kinase JAK2 Phospho-Tyr1007 (JAK2 pY1007)
<b>Clonality:</b>	Polyclonal
<b>Target Modification:</b>	Tyr1007
<b>Modification:</b>	Phosphorylation
<b>Reactivity:</b>	Human, Mouse
<b>Tested Applications:</b>	ELISA, WB
<b>Host:</b>	Rabbit
<b>Recommended dilutions:</b>	ELISA: 1 µg/ml, WB: 1/200 - 1/2000. Optimal dilutions/concentrations should be determined by the end user.
<b>Conjugation:</b>	Unconjugated
<b>Immunogen:</b>	A synthetic phosphorylated peptide around Y1007 of human JAK2.
<b>Isotype:</b>	IgG
<b>Form:</b>	Liquid
<b>Purification:</b>	Purified by affinity chromatography.

# Datasheet

Version: 3.0.0  
Revision date: 31 Jan 2025



**Storage:** Aliquot and store at -20°C. Avoid repeated freeze/thaw cycles.

**UniProt Primary AC:** O60674 ([UniProt](#), [ExPASy](#))

**Gene Symbol:** JAK2

**GeneID:** [3717](#)

**NCBI Accession:** NP\_004963.1

**KEGG:** hsa:3717

**String:** [9606.ENSP00000371067](#)

**Molecular Weight:** Calculated MW: 131 kDa  
Observed MW: 120 kDa

**Buffer:** PBS, pH 7.3, containing 0.02% sodium azide, 50% glycerol.

**Concentration:** > 0.2 mg/ml

**Note:** This product is for research use only.

For Reference Only